



IDEAL COLLEGE FOR ADVANCED STUDIES

(Affiliated to University of Calicut)

KADAKASSERY, THAVANUR PO, MALAPPURAM DT, KERALA 679573

0494 2 686 675 | 2 687 475 | 2 688 455 | 2 688 575

www.idealcollegekadakassery.ac.in

icas@idealeducation.org

INTERNAL QUALITY ASSURANCE CELL (IQAC)

STUDENTS FEEDBACK

(2022-2023)

NUMBER OF RESPONDENTS: 465

Prof. KOYAKUTTY T. K.
PRINCIPAL

IDEAL COLLEGE FOR ADVANCED STUDIES
KADAKASSERY, AYANKALAM, P.O. THAVANUR,
MALAPPURAM DT, KERALA. PIN: 679 573

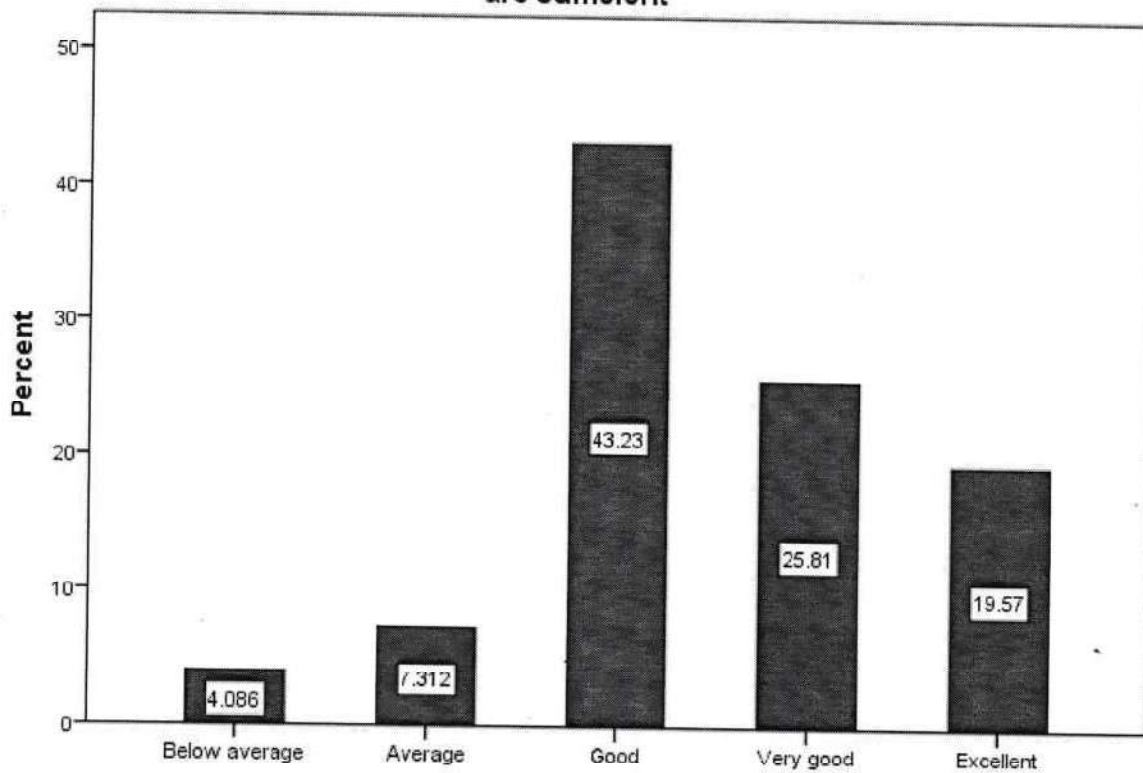


Topics covered in Curriculum and Syllabi of this Course are relevant for life and are sufficient

	Frequency	Percent
Below average	19	4.1
Average	34	7.3
Good	201	43.2
Very good	120	25.8
Excellent	91	19.6
Total	465	100.0

The table shows 91% of students opinioned that the college is excellent in covering topics in curriculum and syllabi and also it is sufficient and relevant for their life

Topics covered in Curriculum and Syllabi of this Course are relevant for life and are sufficient



Topics covered in Curriculum and Syllabi of this Course are relevant for life and are sufficient



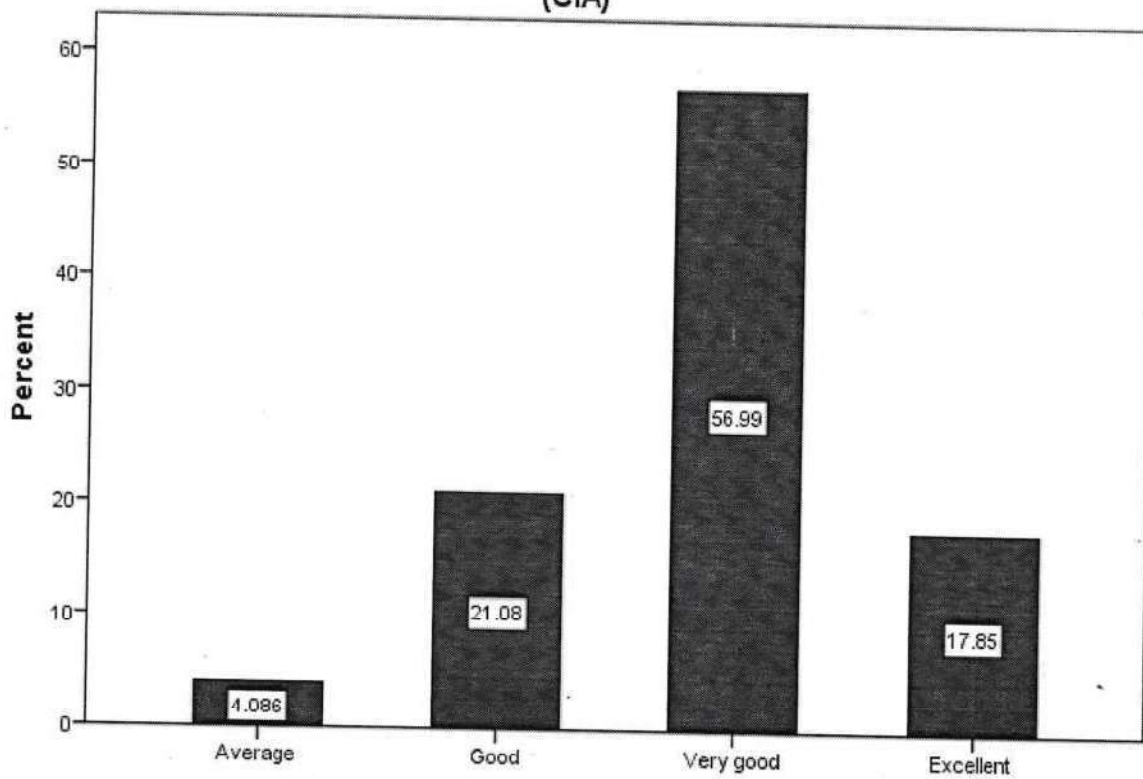
Prof. KOYAKUTTY T. K.
 PRINCIPAL
 IDEAL COLLEGE FOR ADVANCED STUDIES
 KADAKASSERY, AYANKALAM, P.O. THAVANUR
 MALAPPURAM DT., KERALA, INDIA

Extent of syllabi covered in the Class are sufficient to attend the internal exams (CIA)

	Frequency	Percent
Average	19	4.1
Good	98	21.1
Very good	265	57.0
Excellent	83	17.8
Total	465	100.0

The table shows the distribution of extent of syllabi covered for internal exams. Overall, the table indicates that the majority of students states that (95.9 %) institution considered to be good , very good and excellent preparation for the internal exam.

Extent of syllabi covered in the Class are sufficient to attend the internal exams (CIA)



Extent of syllabi covered in the Class are sufficient to attend the internal exams (CIA)

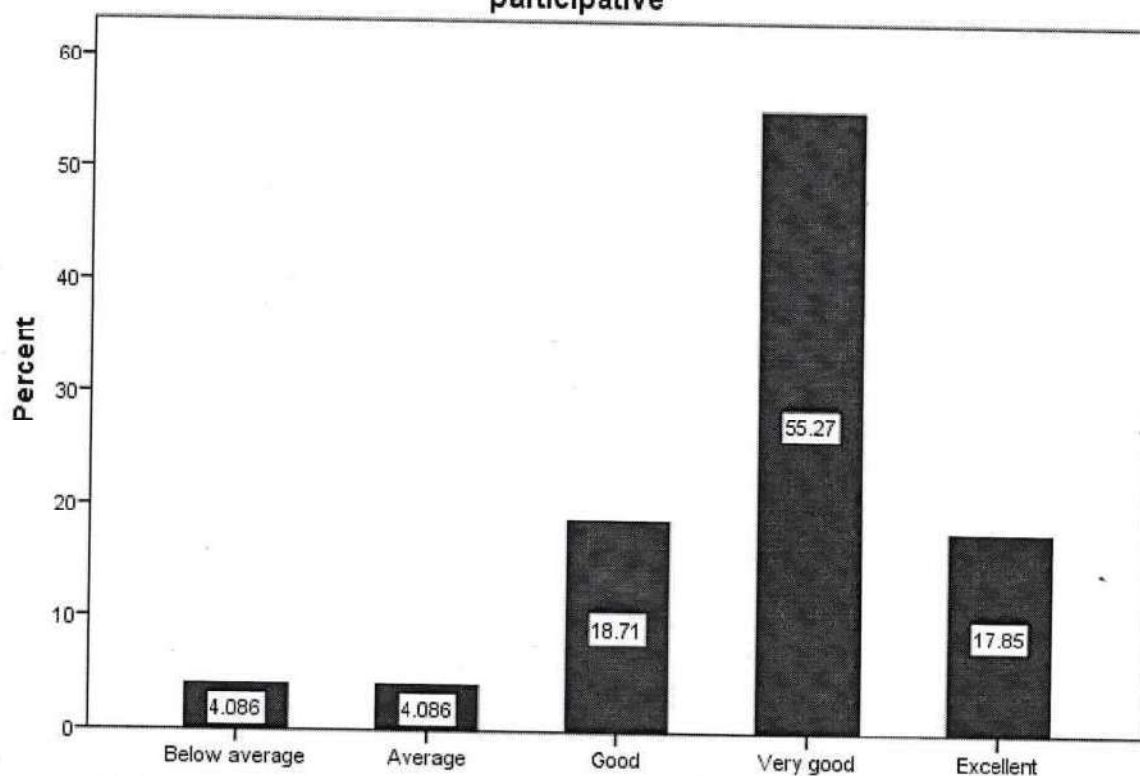
Handwritten signature in green ink.

Course delivery by the faculty member in the class are interesting, interactive and participative

	Frequency	Percent
Below average	19	4.1
Average	19	4.1
Good	87	18.7
Very good	257	55.3
Excellent	83	17.8
Total	465	100.0

The table shows the status of course delivery of faculty members in the classes. Most of the students argue that faculties are very good (55.3%) and good (18.7) in delivering classes though participative and interesting mode.

Course delivery by the faculty member in the class are interesting, interactive and participative



Course delivery by the faculty member in the class are interesting, interactive and participative



[Handwritten Signature]

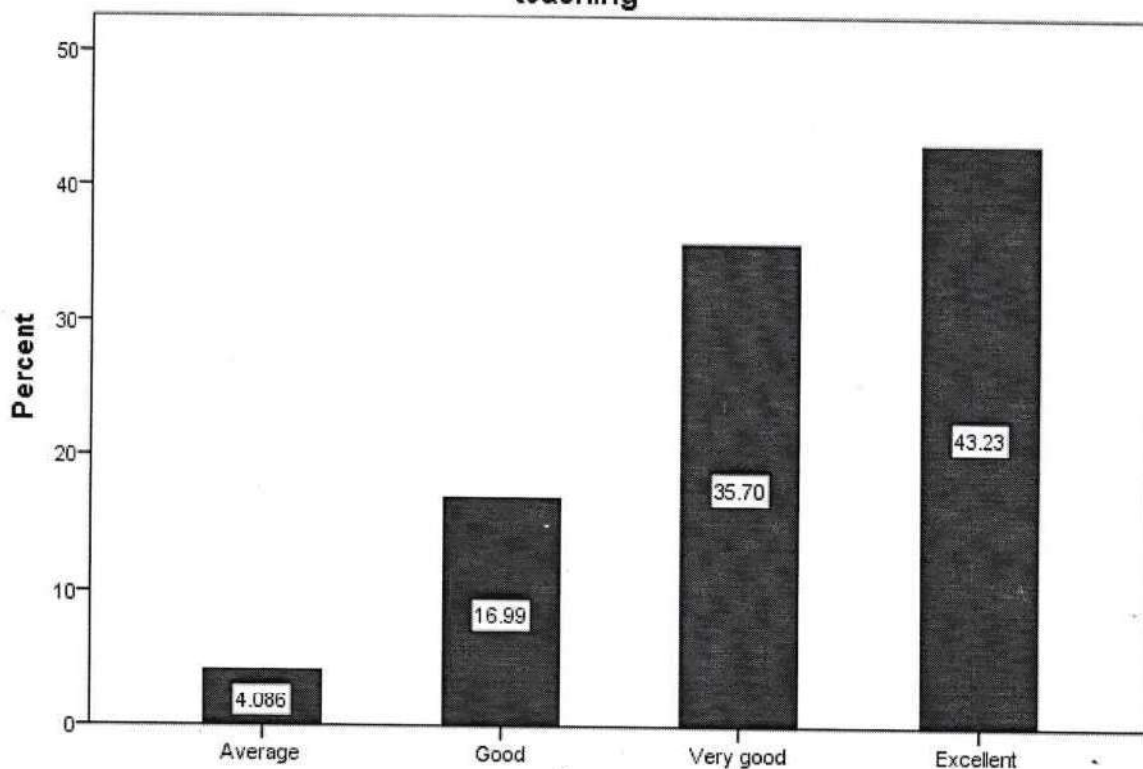
Prof. KOYAKUTTY T. K.

Percentage usage of teaching aids and ICT in the class by faculty to facilitate teaching

	Frequency	Percent
Average	19	4.1
Good	79	17.0
Very good	166	35.7
Excellent	201	43.2
Total	465	100.0

Overall, the table indicates that faculty used teaching aids and ICT in a majority of the classes (95.9%). The most frequent usage category was "Excellent" (43.2%), followed by "Very Good" (35.7%). This suggests that faculty tend to use teaching aids and ICT to a great extent in their classes.

Percentage usage of teaching aids and ICT in the class by faculty to facilitate teaching



Percentage usage of teaching aids and ICT in the class by faculty to facilitate teaching



[Handwritten Signature]

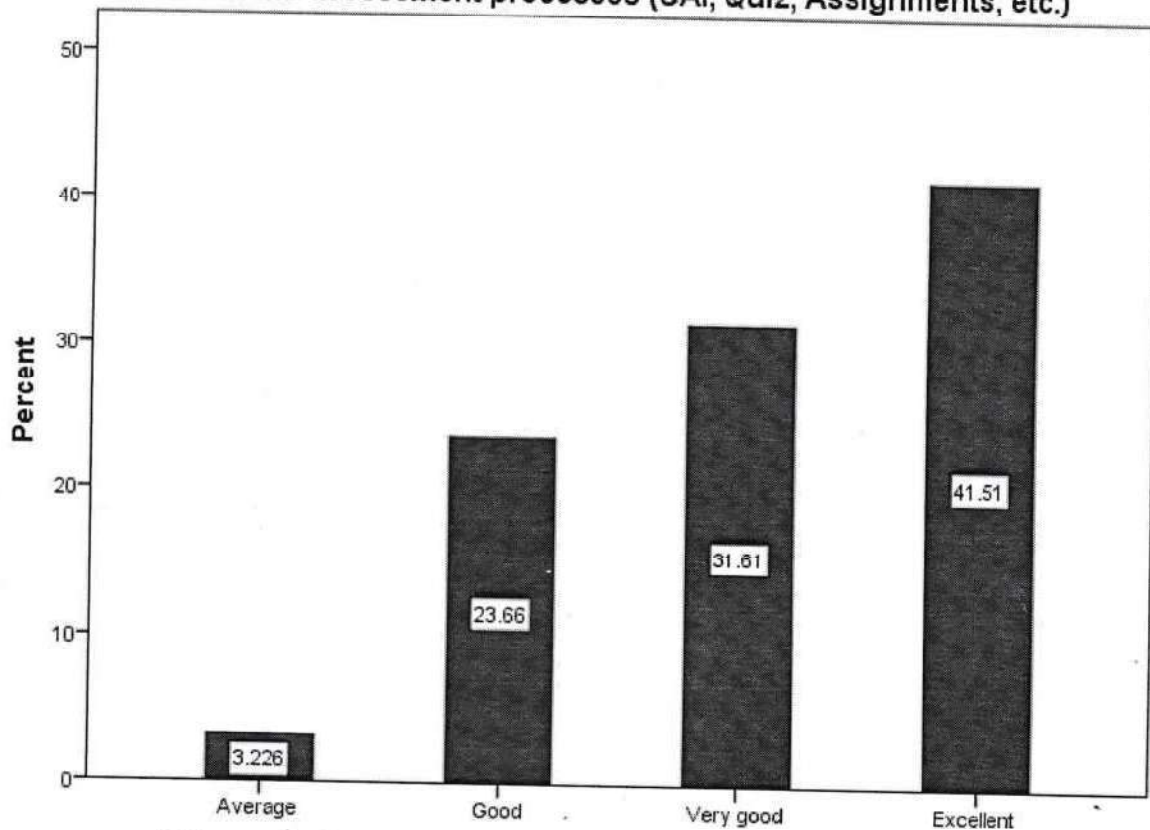
Prof. KOYAKUTTY T. K.
PRINCIPAL
 IDEAL COLLEGE FOR ADVANCED STUDIES,
 KADAKASSERY, AYANICALAM, P.O. THAVANUR
 MALAPPURAM DT., KERALA, PIN: 679 594

Fairness in the assessment processes (CAI, Quiz, Assignments, etc.)

	Frequency	Percent
Average	15	3.2
Good	110	23.7
Very good	147	31.6
Excellent	193	41.5
Total	465	100.0

The table shows the distribution of assessments by fairness in the assessment process. The categories are Average, Good, Very Good, and Excellent. Overall, the table indicates that the majority of students (73.1%) were assessed in a way that is considered to be very good or excellent in terms of fairness in the assessment process..

Fairness in the assessment processes (CAI, Quiz, Assignments, etc.)



Fairness in the assessment processes (CAI, Quiz, Assignments, etc.)



[Handwritten Signature]

Prof. KOYAKUTTY T. K.
PRINCIPAL

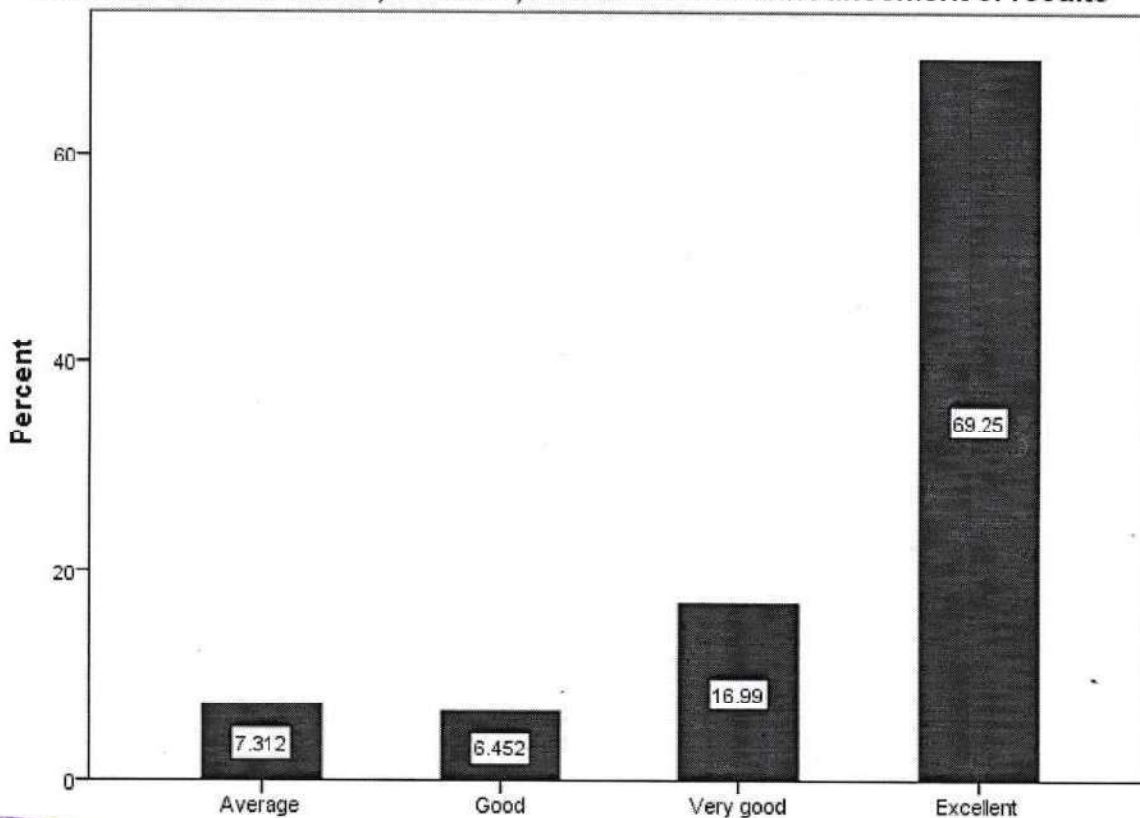
IDEAL COLLEGE FOR ADVANCED STUDIES
KADAKASSERY, AYANKALAM, P.O. THAVANUR
MALAPPURAM DT., KERALA. PIN: 679 594

Internal Exam Schedule, Portions, evaluation and announcement of results

	Frequency	Percent
Average	34	7.3
Good	30	6.5
Very good	79	17.0
Excellent	322	69.2
Total	465	100.0

The table shows the efficiency of conducting internal exam, portion completion, evaluation and announcement of result. The categories are Average, Good, Very Good, and Excellent. Overall, the table indicates that of efficiency of conducting internal exam, portion completion, evaluation and announcement of result considered to be excellent in nearly 70% of the cases (69.2).

Internal Exam Schedule, Portlons, evaluation and announcement of results



Internal Exam Schedule, Portions, evaluation and announcement of results



[Handwritten Signature]

Prof. KOYAKUTTY T. K.
PRINCIPAL

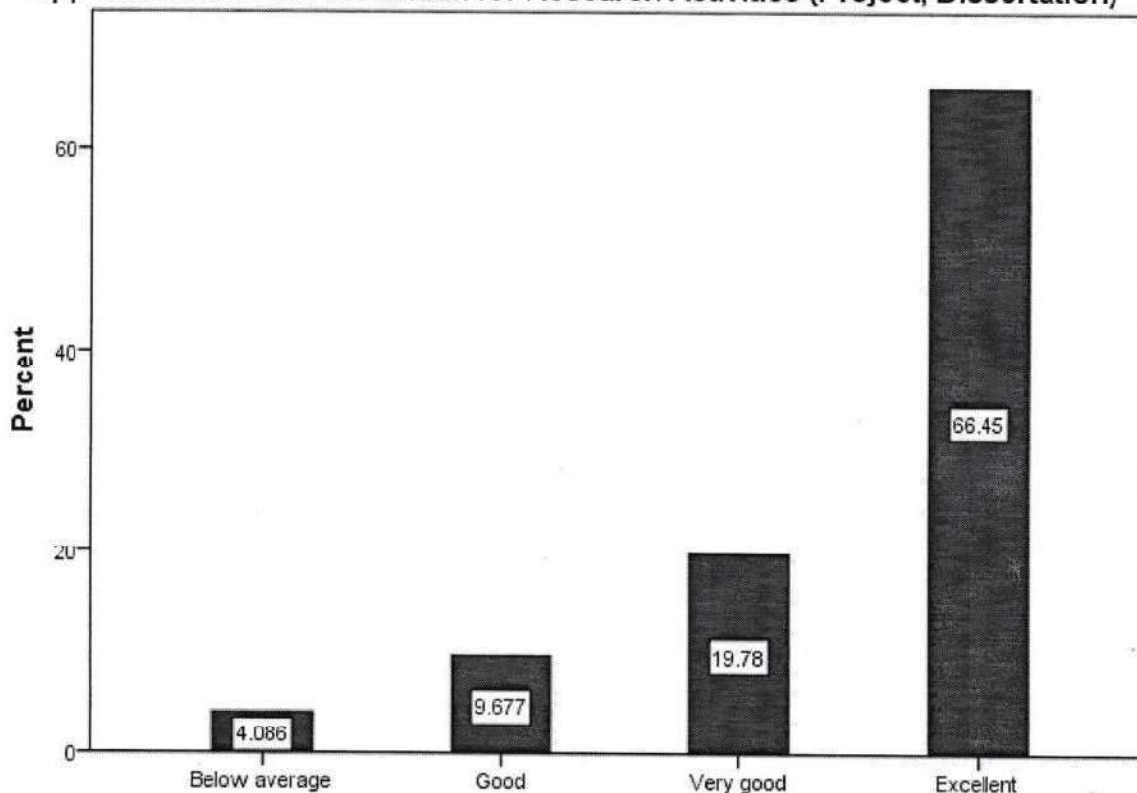
IDEAL COLLEGE FOR ADVANCED STUDIES
KADAKASSERY, AYANKALAM, P.O. THAVANUR,
MALAPPURAM DT., KERALA, PIN: 679 594

Opportunities in the institution for Research Activities (Project, Dissertation)

	Frequency	Percent
Below average	19	4.1
Good	45	9.7
Very good	92	19.8
Excellent	309	66.5
Total	465	100.0

The table shows the number of opportunities in the institution for research activities, categorized by the rating of the activity (dissertation or project). Overall, the table indicates that the majority of research opportunities (86.3%) were rated as Very Good or Excellent. This suggests that the institution offers a high number of high-quality research opportunities.

Opportunities in the institution for Research Activities (Project, Dissertation)



Opportunities in the Institution for Research Activities (Project, Dissertation)



[Handwritten Signature]

Prof. KOYAKUTTY T. K.
PRINCIPAL

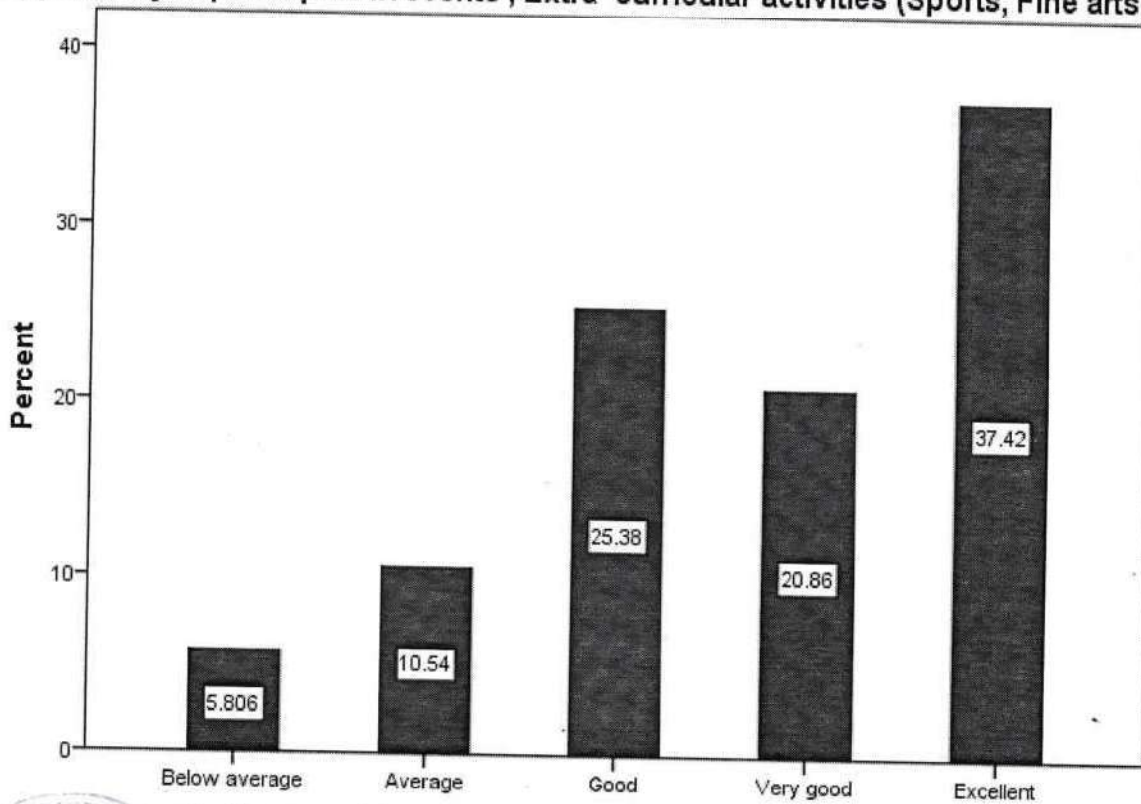
IDEAL COLLEGE FOR ADVANCED STUDIES
KADAKASSERY, AYANKALAM, P.O. THAVANUR,
MALAPPURAM DT., KERALA, PIN: 673 534

Opportunity to participate in events , Extra -curricular activities (Sports, Fine arts)

	Frequency	Percent
Below average	27	5.8
Average	49	10.5
Good	118	25.4
Very good	97	20.9
Excellent	174	37.4
Total	465	100.0

The table shows the frequency of students participating in extracurricular activities. The categories are Below Average, Average, Good, Very Good, and Excellent. Overall, the table indicates that a majority of students (83.7%) participated in extracurricular activities at a level that is considered to be good , very good and excellent . However, a significant number of students (16.3%) participated at a level that is considered below average or average.

Opportunity to participate in events , Extra -curricular activities (Sports, Fine arts)



Opportunity to participate in events , Extra -curricular activities (Sports, Fine arts)



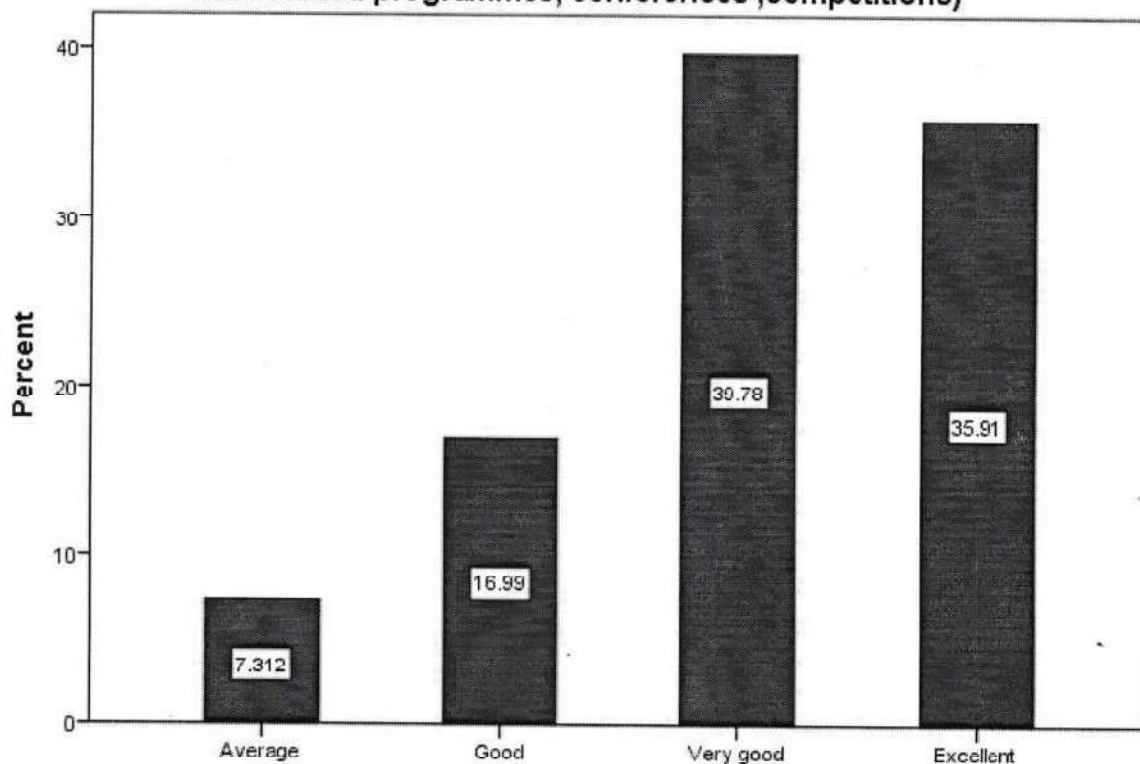
Am
Prof. KOYAKUTTY T. K.
 PRINCIPAL
 IDEAL COLLEGE FOR ADVANCED STUDIES
 KADAKASSERY, AYANKALAM, P.O. THAVANUR
 MALAPPURAM DT, KERALA, PIN: 679 594

Opportunities for out of classroom learning (guest lectures, seminars, workshop, value Added programmes, conferences ,competitions)

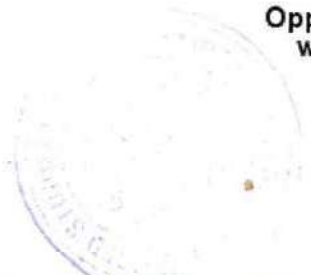
	Frequency	Percent
Average	34	7.3
Good	79	17.0
Very good	185	39.8
Excellent	167	35.9
Total	465	100.0

The table shows the frequency of out of classroom learning opportunities offered. The categories are Guest Lectures, Seminars, Workshops, Value Added Programs, Conferences, and Competitions. Overall, the table indicates that out-of-classroom learning opportunities were offered at a frequency that is considered very good or excellent in over 75% of the cases (75.7%). This suggests that the institution offers a high number of out-of-classroom learning opportunities for students.

Opportunities for out of classroom learning (guest lectures, seminars, workshop, value Added programmes, conferences ,competitions)



Opportunities for out of classroom learning (guest lectures, seminars, workshop, value Added programmes, conferences ,competitions)



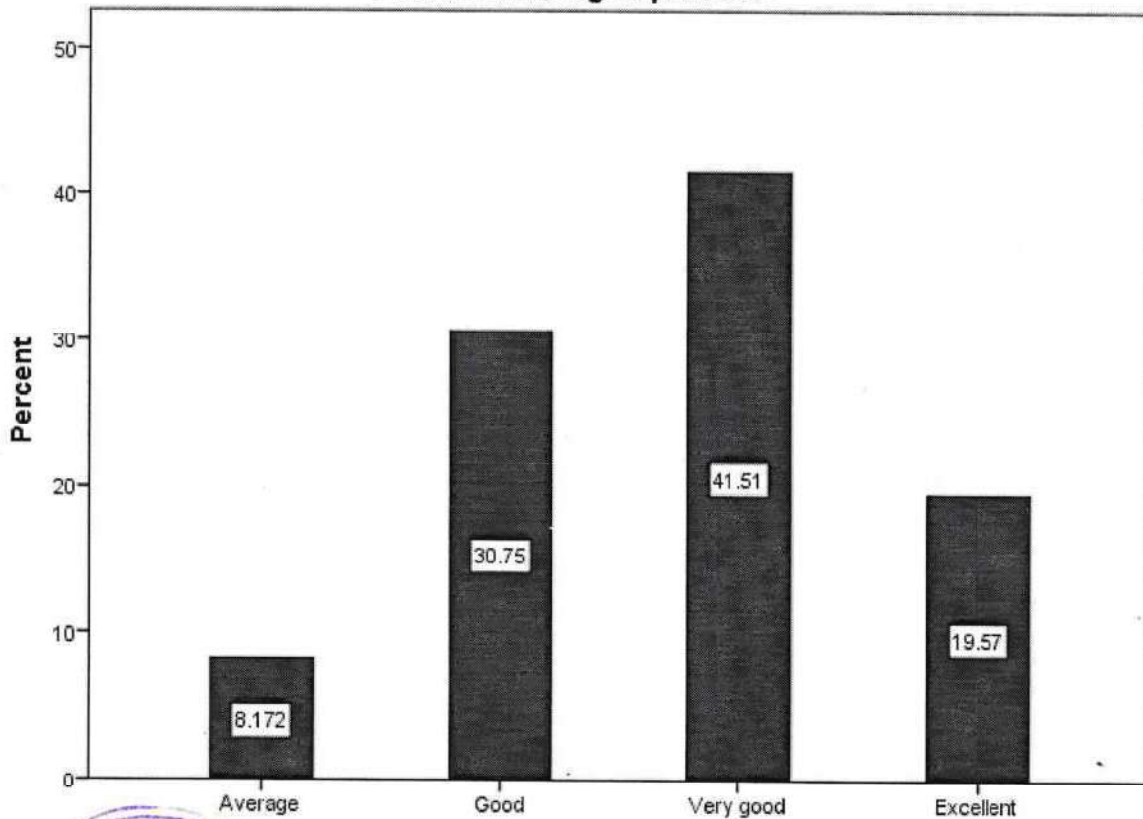

 PRINCIPAL
 IDEAL COLLEGE FOR ADVANCED STUDIES
 KADAKASSERY, AVANKALAM, P.O. THAVANUR
 MALAPPURAM DT., KERALA, PIN: 679 594

Overall Learning Experience

	Frequency	Percent
Average	38	8.2
Good	143	30.8
Very good	193	41.5
Excellent	91	19.6
Total	465	100.0

The table shows the average frequency of overall learning experiences for a group of students. Overall, the table indicates that the majority of students (72.1%) had overall learning experiences that were considered to be very good or excellent. This suggests that the learning environment is effective for a large portion of the students.

Overall Learning Experience




Prof. KOYAKUTTY T. K.
PRINCIPAL
 IDEAL COLLEGE FOR ADVANCED STUDIES
 KADAKASSERY, AYANKALAM, P.O. THAVAYAPUR
 MALAPPURAM DT., KERALA. PIN: 679 534