



IDEAL COLLEGE FOR ADVANCED STUDIES

(Affiliated to University of Calicut)

KADAKASSERY, THAVANUR PO, MALAPPURAM DT, KERALA 679573

0494 2 686 675 | 2 687 475 | 2 688 455 | 2 688 575

www.idealcollegekadakassery.ac.in

icas@idealeducation.org

INTERNAL QUALITY ASSURANCE CELL (IQAC)

STUDENTS FEEDBACK

(2020-2021)

NUMBER OF RESPONDENTS: 410


Prof. KOYAKUTTY T. K.
PRINCIPAL
IDEAL COLLEGE FOR ADVANCED STUDIES
KADAKASSERY, AYANKALAM, P.O. THAVANUR
MALAPPURAM DT., KERALA, PIN: 679 594

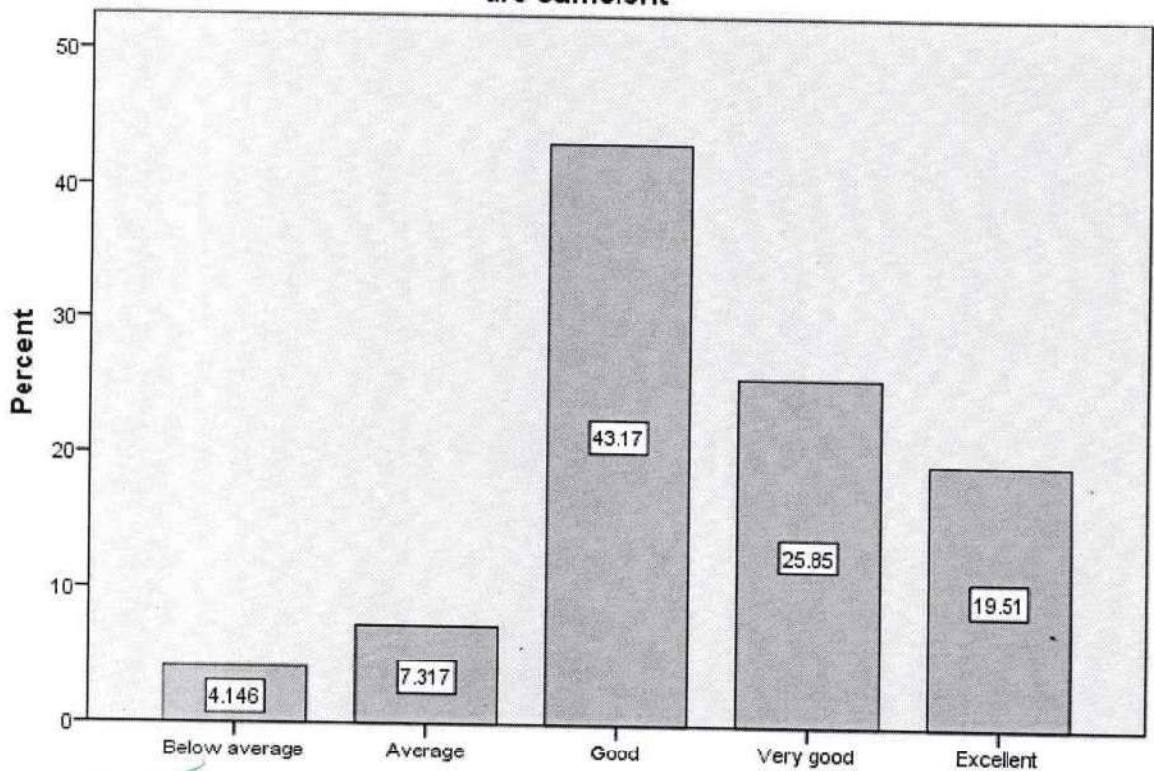


Topics covered in Curriculum and Syllabi of this Course are relevant for life and are sufficient

	Frequency	Percent
Below average	17	4.1
Average	30	7.3
Good	177	43.2
Very good	106	25.9
Excellent	80	19.5
Total	410	100.0

The table shows 88.6% of students opinioned that the college is good ,very good and excellent in covering topics in curriculum and syllabi and also it is sufficient and relevant for their life

Topics covered in Curriculum and Syllabi of this Course are relevant for life and are sufficient



Topics covered in Curriculum and Syllabi of this Course are relevant for life and are sufficient

Handwritten signature
Prof. KOYAKUTTY T. K.
 PRINCIPAL
 IDEAL COLLEGE FOR ADVANCED STUDIES
 KODAKASSERY, AVINAKALAM, P.O. THAVANIP
 MALAPPURAM DT., KERALA, PIN-579441

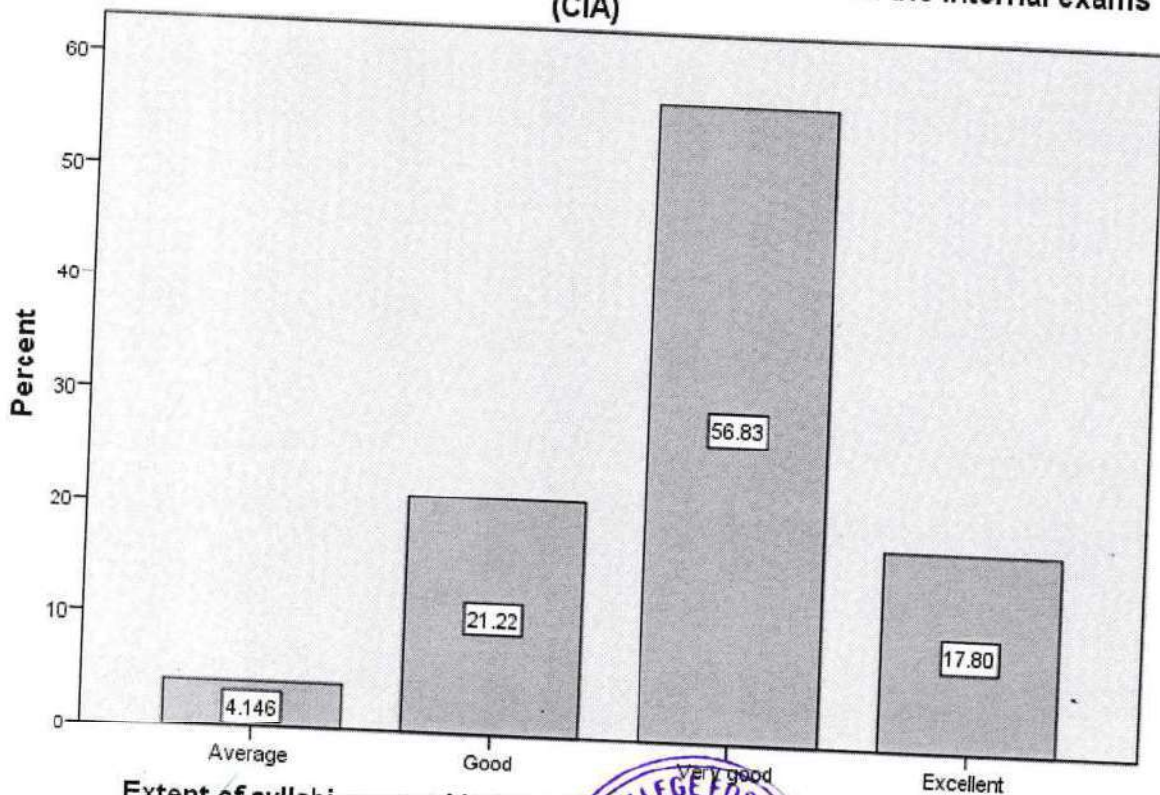


Extent of syllabi covered in the Class are sufficient to attend the internal exams (CIA)

	Frequency	Percent
Average	17	4.1
Good	87	21.2
Very good	233	56.8
Excellent	73	17.8
Total	410	100.0

The table shows the distribution of extent of syllabi covered for internal exams. Overall, the table indicates that the majority of students states that (95.8 %) institution considered to be good , very good and excellent preparation for the internal exam.

Extent of syllabi covered in the Class are sufficient to attend the internal exams (CIA)



Extent of syllabi covered in the Class are sufficient to attend the internal exams (CIA)

Prof. KOYAKUTTY T. K.
PRINCIPAL

IDEAL COLLEGE FOR ADVANCED STUDIES
KADAKASSERY, AYANKALAM, P.O. THAVANUR
MALAPPURAM DT., KERALA, PIN: 679 594

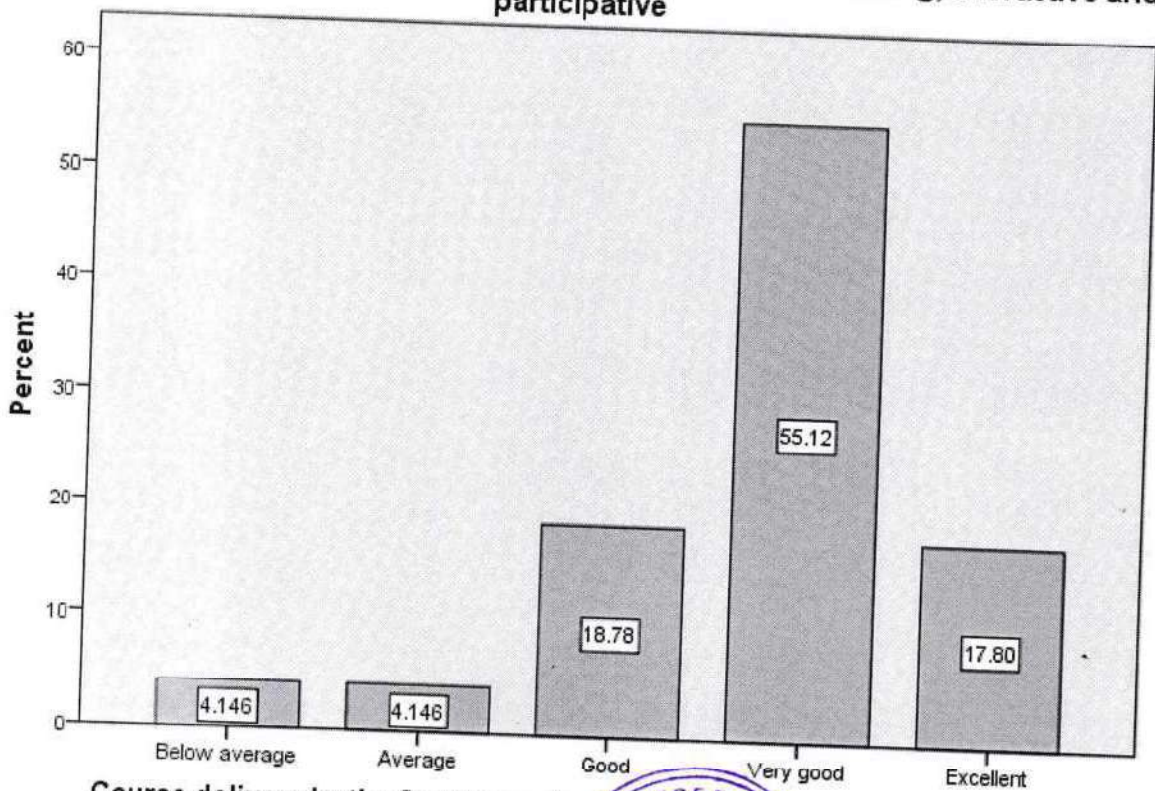


Course delivery by the faculty member in the class are interesting, interactive and participative

	Frequency	Percent
Below average	17	4.1
Average	17	4.1
Good	77	18.8
Very good	226	55.1
Excellent	73	17.8
Total	410	100.0

The table shows the status of course delivery of faculty members in the classes. Most of the students argue that faculties are very good (55.1%) and good (18.8%) in delivering classes though participative and interesting mode.

Course delivery by the faculty member in the class are interesting, interactive and participative



Course delivery by the faculty member in the class are interesting, interactive and participative

[Handwritten signature]

Prof. KOYAKUTTY T. K.
PRINCIPAL

IDEAL COLLEGE FOR ADVANCED STUDIES
KADAKASSERY, AYANKALAM, P.O. THAVANUR
MALAPPURAM DT., KERALA. PIN: 679 524

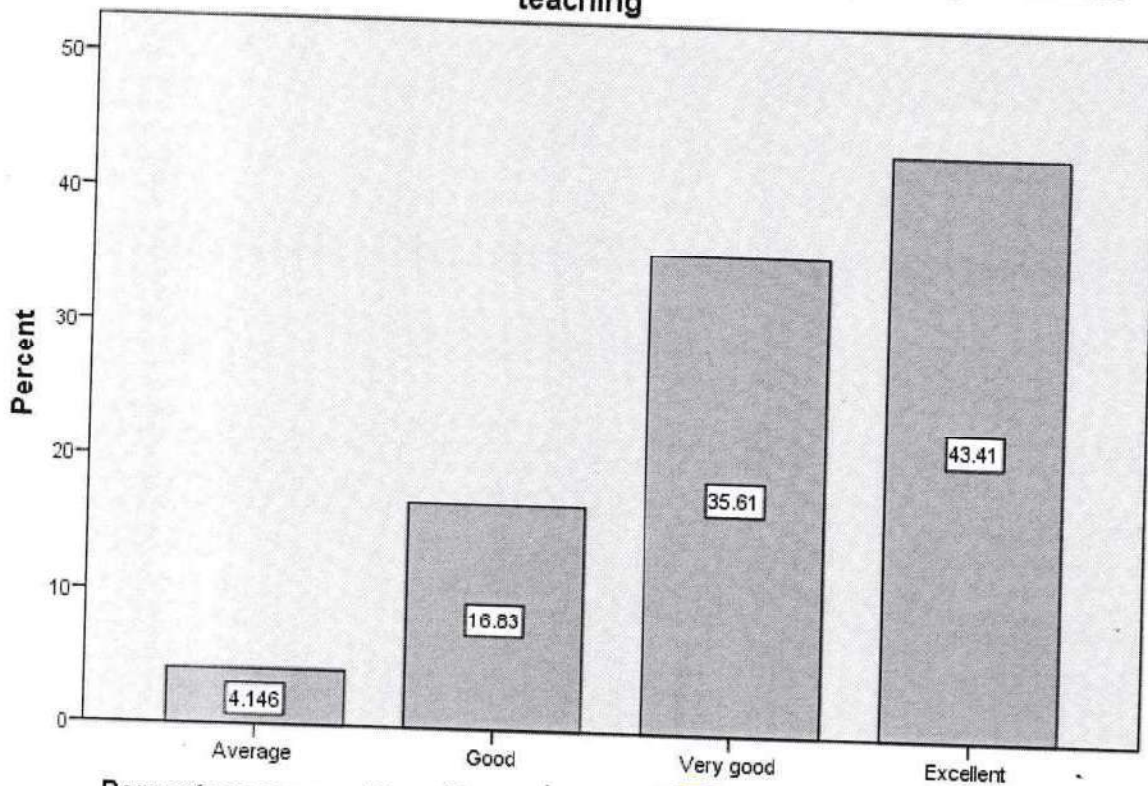


Percentage usage of teaching aids and ICT in the class by faculty to facilitate teaching

	Frequency	Percent
Average	17	4.1
Good	69	16.8
Very good	146	35.6
Excellent	178	43.4
Total	410	100.0

Overall, the table indicates that faculty used teaching aids and ICT in a majority of the classes. The most frequent usage category was "Excellent" (43.4%), followed by "Very Good" (35.6%). This suggests that faculty tend to use teaching aids and ICT to a great extent in their classes.

Percentage usage of teaching aids and ICT in the class by faculty to facilitate teaching

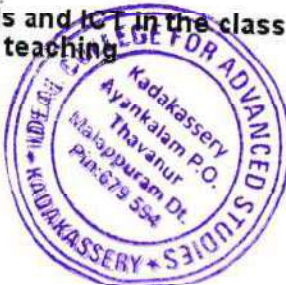


Percentage usage of teaching aids and ICT in the class by faculty to facilitate teaching

[Handwritten signature]

Prof. KOYAKUTTY T. K.
PRINCIPAL

IDEAL COLLEGE FOR ADVANCED STUDIES
KADAKASSERY, AYANKALAM, P.O. THAVANUR
MALAPPURAM DT., KERALA, PIN-679 554

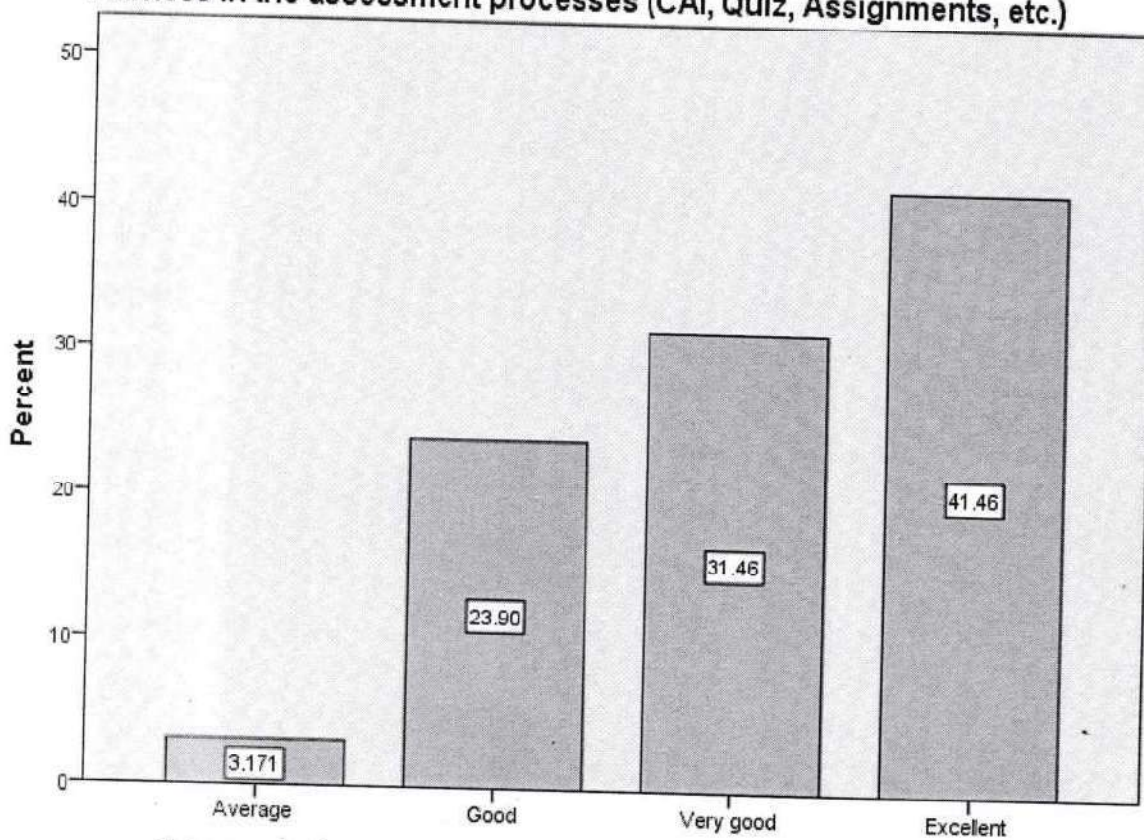


Fairness in the assessment processes (CAI, Quiz, Assignments, etc.)

	Frequency	Percent
Average	13	3.2
Good	98	23.9
Very good	129	31.5
Excellent	170	41.5
Total	410	100.0

The table shows the distribution of assessments by fairness in the assessment process. The categories are Average, Good, Very Good, and Excellent. Overall, the table indicates that the majority of students (73%) were assessed in a way that is considered to be very good or excellent in terms of fairness in the assessment process..

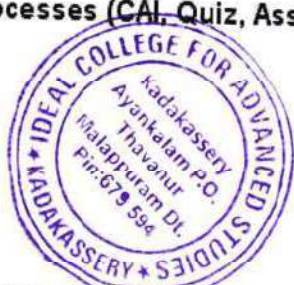
Fairness in the assessment processes (CAI, Quiz, Assignments, etc.)



Fairness in the assessment processes (CAI, Quiz, Assignments, etc.)

[Handwritten signature]

Prof. KOYAKUTTY T. K.
PRINCIPAL
 IDEAL COLLEGE FOR ADVANCED STUDIES
 KADAKASSEERY, THAVANUR
 MALAPPURAM DISTRICT, KERALA

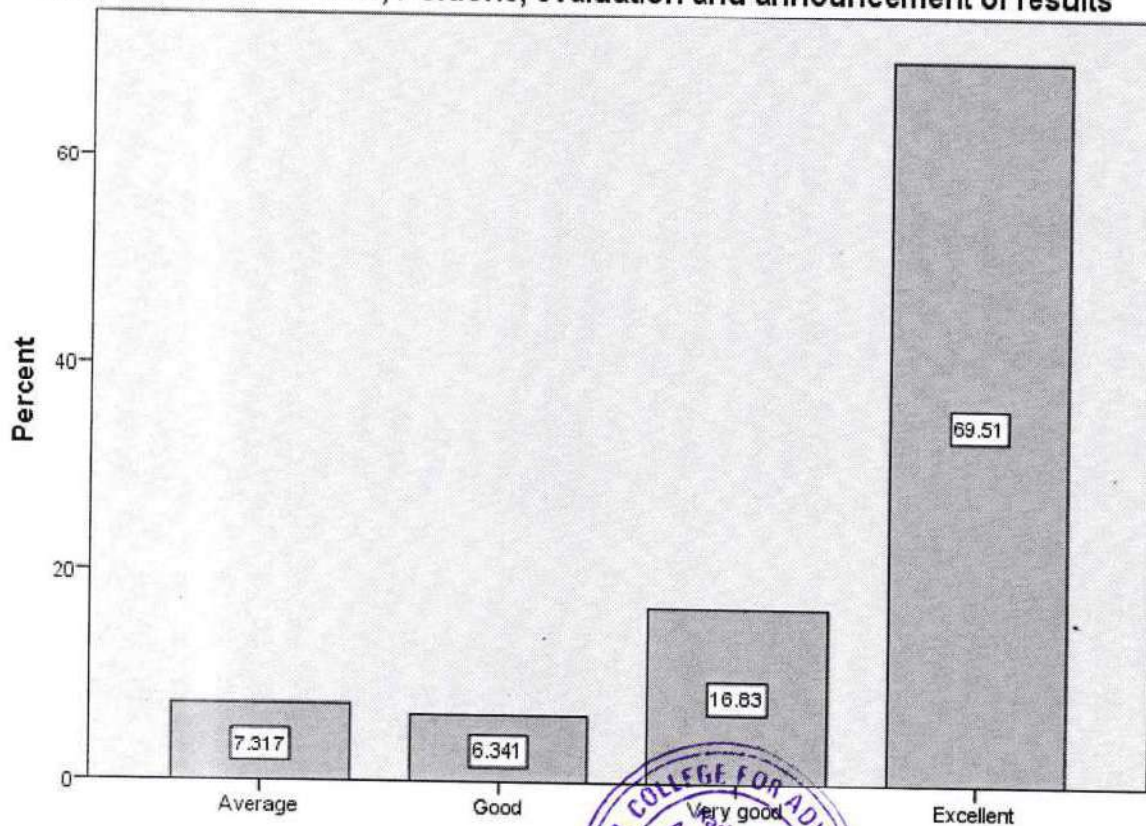


Internal Exam Schedule, Portions, evaluation and announcement of results

	Frequency	Percent
Average	30	7.3
Good	26	6.3
Very good	69	16.8
Excellent	285	69.5
Total	410	100.0

The table shows the efficiency of conducting internal exam, portion completion, evaluation and announcement of result. The categories are Average, Good, Very Good, and Excellent. Overall, the table indicates that of efficiency of conducting internal exam, portion completion, evaluation and announcement of result considered to be excellent in nearly 70% of the cases (69.5).

Internal Exam Schedule, Portions, evaluation and announcement of results



Internal Exam Schedule, Portions, evaluation and announcement of results

Handwritten signature

Prof. KOYAKUTTY T. K.
PRINCIPAL

IDEAL COLLEGE FOR ADVANCED STUDIES
KADAKASSERY, AVANKAL
MALAPPURAM DT., KERALA

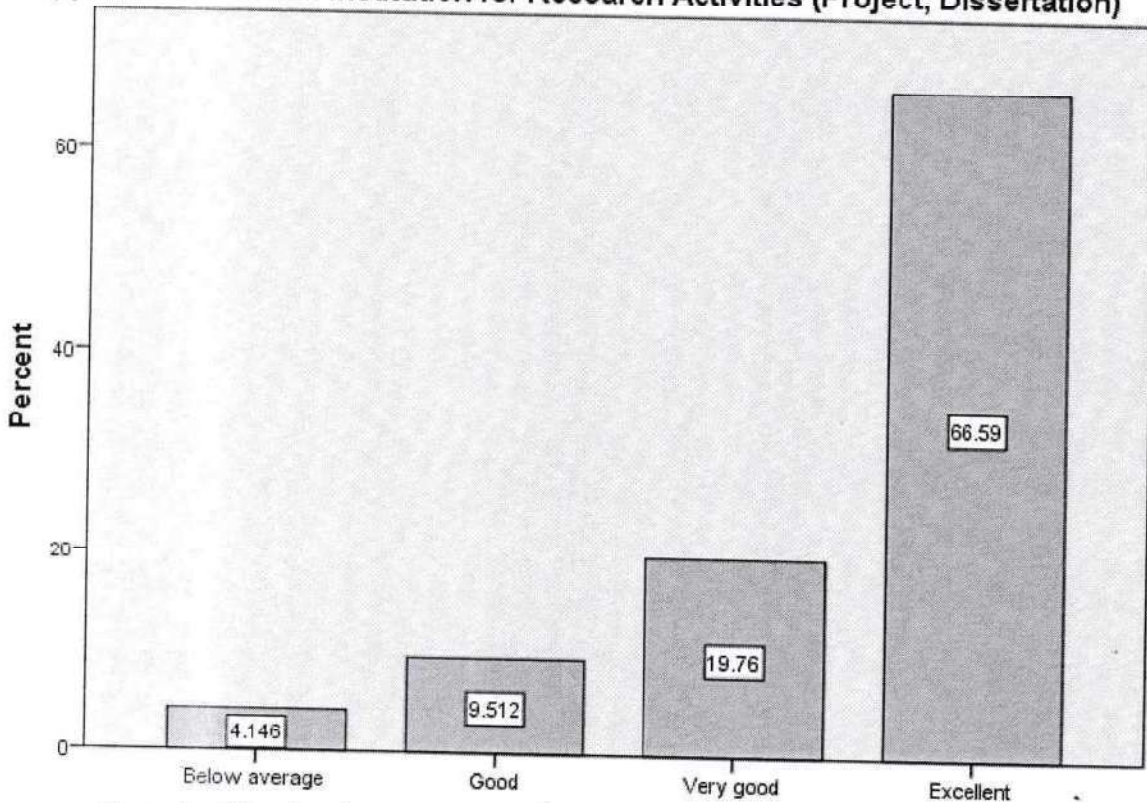


Opportunities in the institution for Research Activities (Project, Dissertation)

	Frequency	Percent
Below average	17	4.1
Good	39	9.5
Very good	81	19.8
Excellent	273	66.6
Total	410	100.0

The table shows the number of opportunities in the institution for research activities, categorized by the rating of the activity (dissertation or project). Overall, the table indicates that the majority of research opportunities (86.4%) were rated as Very Good or Excellent. This suggests that the institution offers a high number of high-quality research opportunities.

Opportunities in the institution for Research Activities (Project, Dissertation)



Opportunities in the institution for Research Activities (Project, Dissertation)

Handwritten signature

Prof. KOYAKUTTY T. K.
PRINCIPAL
 IDEAL COLLEGE FOR ADVANCED STUDIES
 KADAKASSERY, AYANKALAM, MALAPPURAM
 MALAPPURAM DT., KERALA. PIN- 956

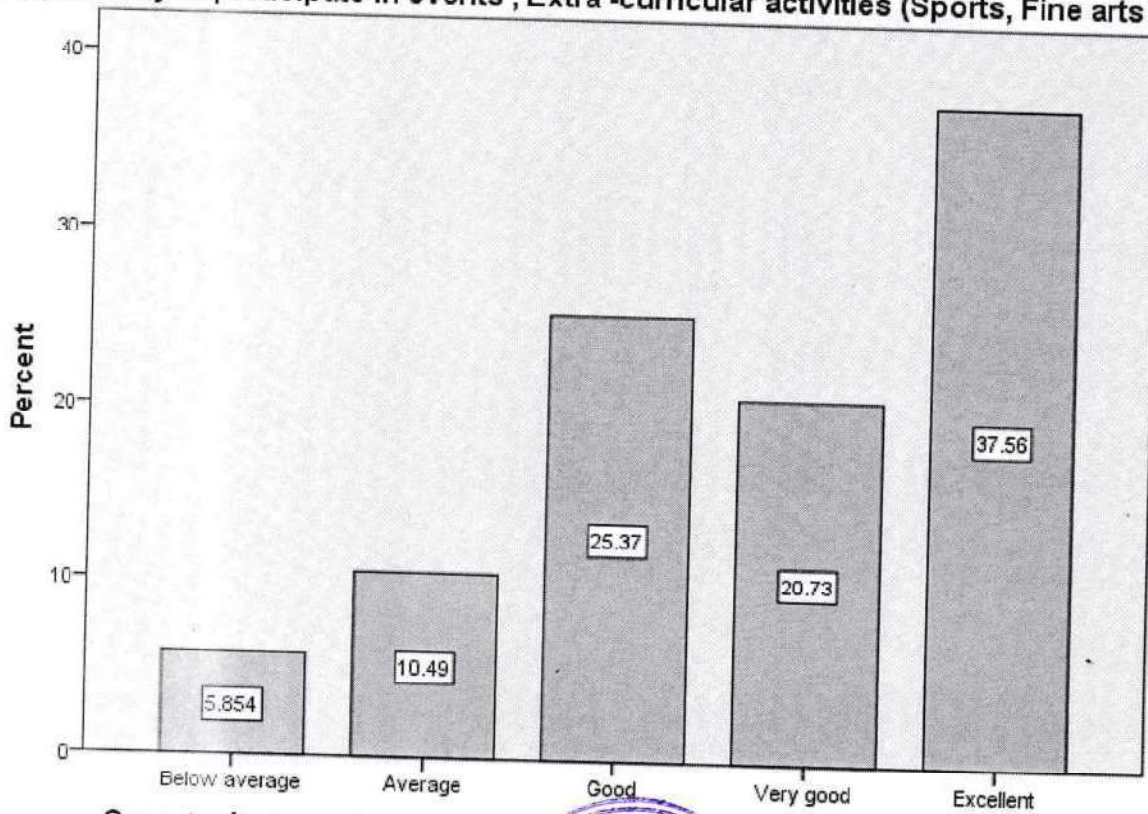


Opportunity to participate in events , Extra -curricular activities (Sports, Fine arts)

	Frequency	Percent
Below average	24	5.9
Average	43	10.5
Good	104	25.4
Very good	85	20.7
Excellent	154	37.6
Total	410	100.0

The table shows the frequency of students participating in extracurricular activities. The categories are Below Average, Average, Good, Very Good, and Excellent. Overall, the table indicates that a majority of students participated in extracurricular activities at a level that is considered to be good , very good and excellent . However, a significant number of students (16.4%) participated at a level that is considered below average or average.

Opportunity to participate in events , Extra -curricular activities (Sports, Fine arts)



Opportunity to participate in events , Extra -curricular activities (Sports, Fine arts)

[Handwritten signature]

Prof. KOYAKUTTY T. K.
PRINCIPAL
IDEAL COLLEGE FOR ADVANCED STUDIES
KABAKASSERY, AYANKALAM, P.O. THAVANUR
MALAPPRAM DT., KERALA, PIN: 679 590

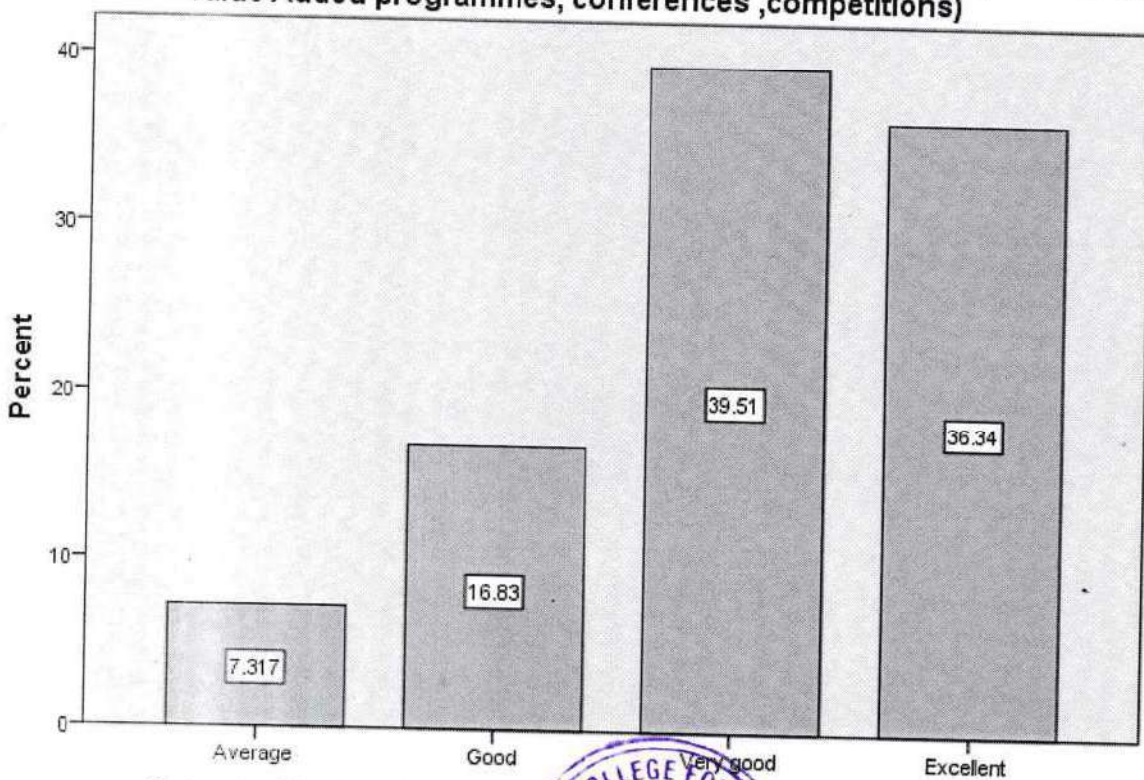


Opportunities for out of classroom learning (guest lectures, seminars, workshop, value Added programmes, conferences ,competitions)

	Frequency	Percent
Average	30	7.3
Good	69	16.8
Very good	162	39.5
Excellent	149	36.3
Total	410	100.0

The table shows the frequency of out-of-classroom learning opportunities offered. The categories are Guest Lectures, Seminars, Workshops, Value Added Programs, Conferences, and Competitions. Overall, the table indicates that out-of-classroom learning opportunities were offered at a frequency that is considered very good or excellent in over 75% of the cases (75.8%). This suggests that the institution offers a high number of out-of-classroom learning opportunities for students.

Opportunities for out of classroom learning (guest lectures, seminars, workshop, value Added programmes, conferences ,competitions)



Opportunities for out of classroom learning (guest lectures, seminars, workshop, value Added programmes, conferences ,competitions)

[Signature]
Prof. KOYAKUTTI
 PRINCIPAL
 IDEAL COLLEGE FOR ADVANCED STUDIES
 KADAKASSERY, AYANKALAM, P.O. THARANUR
 MALAPPUURAM DT., KERALA, PIN 692 522

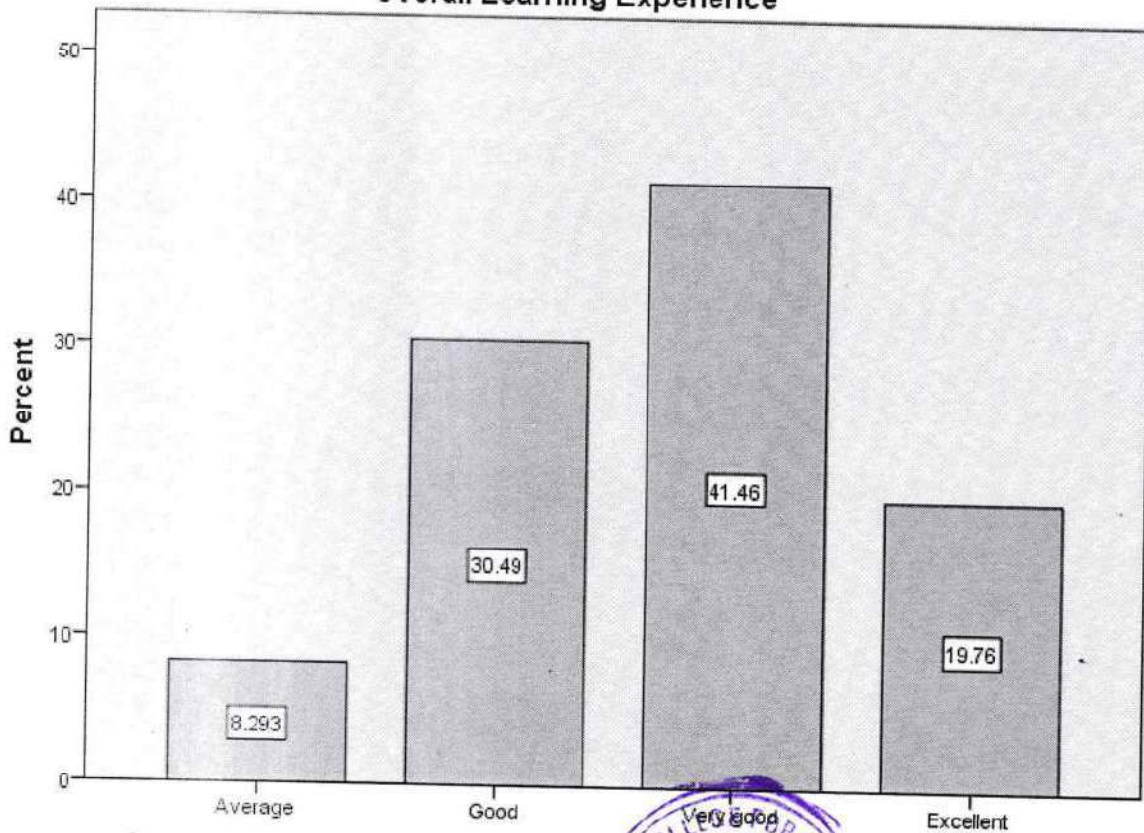


Overall Learning Experience

	Frequency	Percent
Average	34	8.3
Good	125	30.5
Very good	170	41.5
Excellent	81	19.8
Total	410	100.0

The table shows the average frequency of overall learning experiences for a group of students. Overall, the table indicates that the majority of students (61.3 %) had overall learning experiences that were considered to be very good or excellent. This suggests that the learning environment is effective for a large portion of the students.

Overall Learning Experience



Handwritten signature

Prof. KOYAKUTTY
 PRINCIPAL
 IDEAL COLLEGE FOR ADVANCED STUDIES
 KADAKASSERY, AVANKALAM
 MALAPPURAM DT., KERALA

