



IDEAL COLLEGE FOR ADVANCED STUDIES

(Affiliated to University of Calicut)

KADAKASSERY, THAVANUR PO, MALAPPURAM DT, KERALA 679573
0494 2 686 675 | 2 687 475 | 2 688 455 | 2 688 575

www.idealcollegekadakassery.ac.in


icas@idealeducation.org

INTERNAL QUALITY ASSURANCE CELL (IQAC)

STUDENTS FEEDBACK

(2021-2022)

NUMBER OF RESPONDENTS: 480


Prof. KOYAKUTTY T. K.
PRINCIPAL
IDEAL COLLEGE FOR ADVANCED STUDIES
KADAKASSERY, AYANKALAM, P.O. THAVANUR
MALAPPURAM DT., KERALA, PIN: 679 594

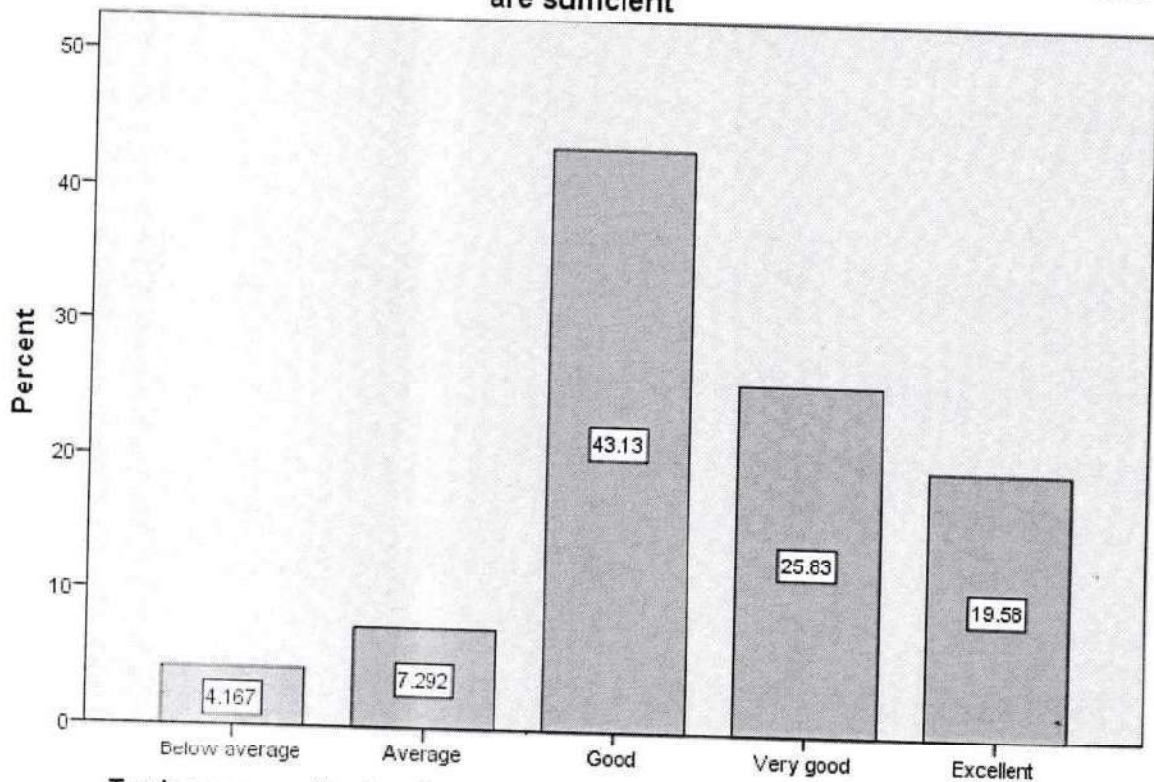


Topics covered in Curriculum and Syllabi of this Course are relevant for life and are sufficient

	Frequency	Percent
Below average	20	4.2
Average	35	7.3
Good	207	43.1
Very good	124	25.8
Excellent	94	19.6
Total	480	100.0

The table shows 88.5% of students opinioned that the college is good, very good and excellent in covering topics in curriculum and syllabi and also it is sufficient and relevant for their life

Topics covered in Curriculum and Syllabi of this Course are relevant for life and are sufficient



Topics covered in Curriculum and Syllabi of this Course are relevant for life and are sufficient

DM
Prof. KOYAKUTTY T. K.
 PRINCIPAL
 IDEAL COLLEGE FOR ADVANCED STUDIES
 KADAKASSERY, AYANKALAM, P.O. THAVANIL
 MALAPPURAM DT., KERALA, PIN: 673 594

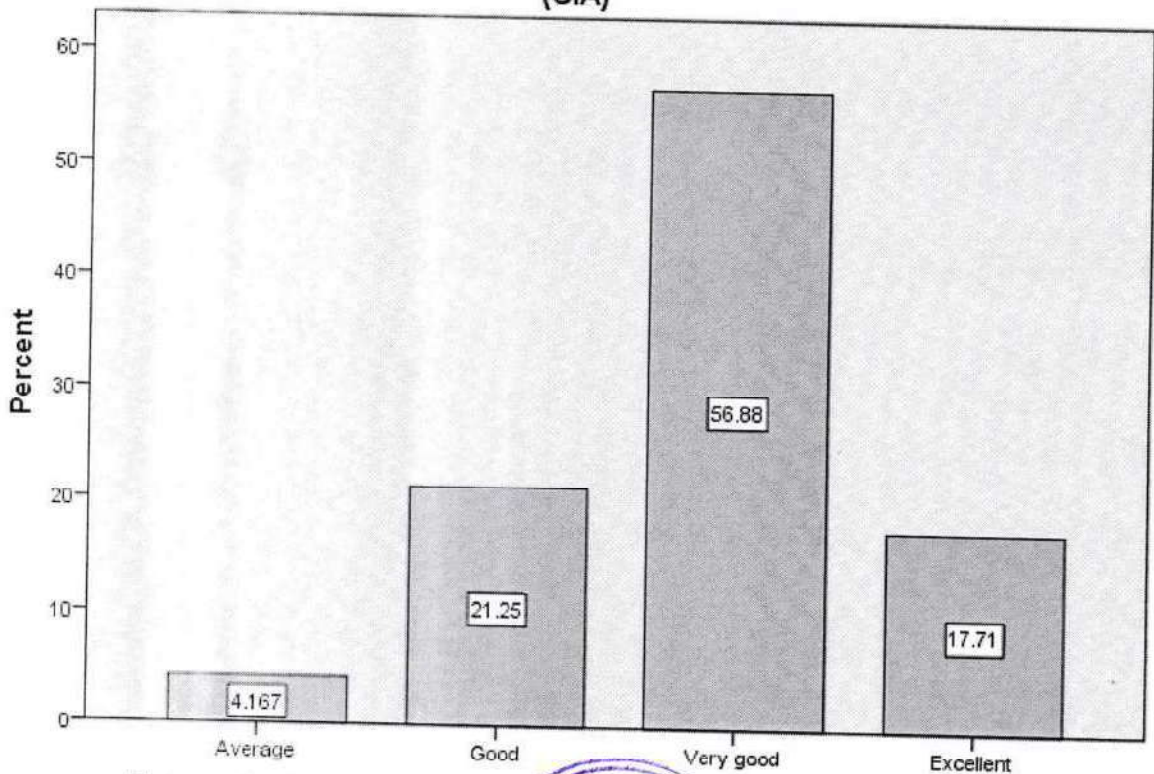


Extent of syllabi covered in the Class are sufficient to attend the internal exams (CIA)

	Frequency	Percent
Average	20	4.2
Good	102	21.3
Very good	273	56.9
Excellent	85	17.7
Total	480	100.0

The table shows the distribution of extent of syllabi covered for internal exams. Overall, the table indicates that the majority of students states that (95.9 %) institution considered to be good, very good and excellent preparation for the internal exam.

Extent of syllabi covered in the Class are sufficient to attend the internal exams (CIA)



Extent of syllabi covered in the Class are sufficient to attend the internal exams (CIA)

[Handwritten Signature]

Prof. KOYAKUTTY T. K.
PRINCIPAL
IDEAL COLLEGE FOR ADVANCED STUDIES
KADAKASSERY, AYANKALAM, P. O. THAVANUR
MALAPPURAM DT., KERALA. PIN: 679 594

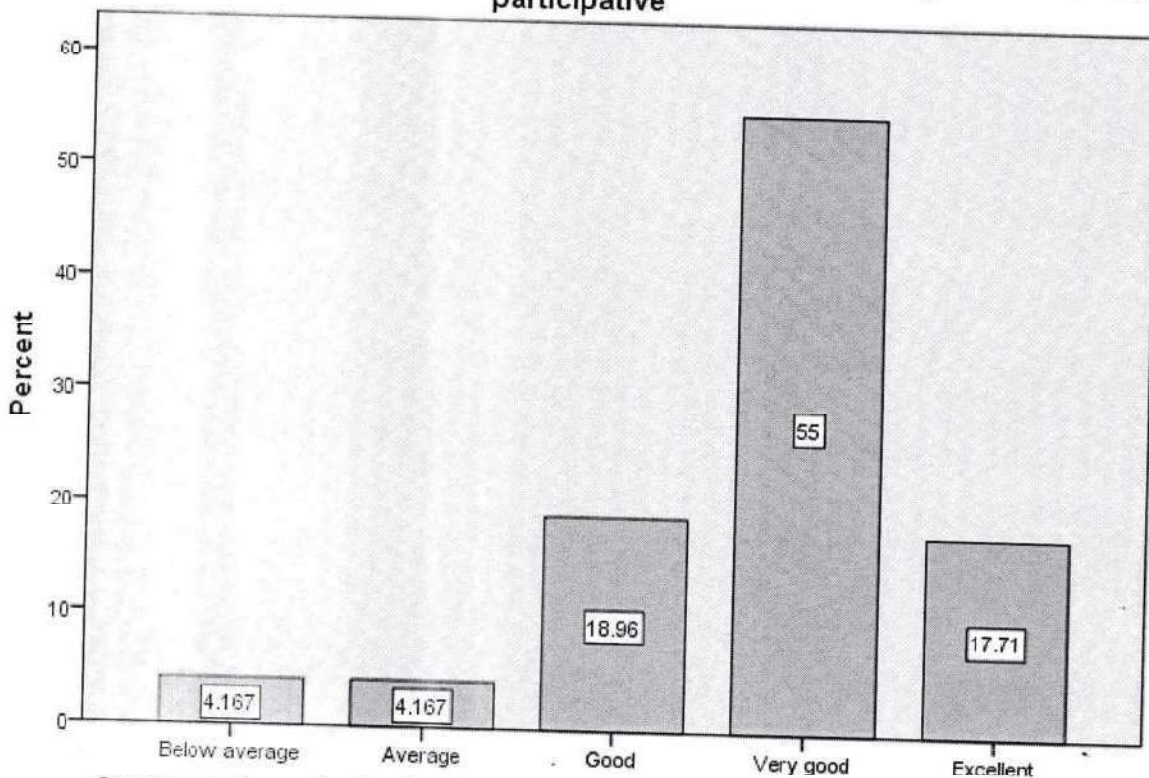


Course delivery by the faculty member in the class are interesting, interactive and participative

	Frequency	Percent
Below average	20	4.2
Average	20	4.2
Good	91	19.0
Very good	264	55.0
Excellent	85	17.7
Total	480	100.0

The table shows the status of course delivery of faculty members in the classes. Most of the students argue that faculties are very good (55%) and good (19%) in delivering classes through participative and interesting mode.

Course delivery by the faculty member in the class are interesting, interactive and participative



Course delivery by the faculty member in the class are interesting, interactive and participative

[Handwritten signature]

Prof. KOYAKUTTY T. K.
PRINCIPAL
 IDEAL COLLEGE FOR ADVANCED STUDIES
 KADAKASSERY, AYANKALAM, P.O. THAVANUR,
 MALAPPURAM DT., KERALA, PIN: 679 524

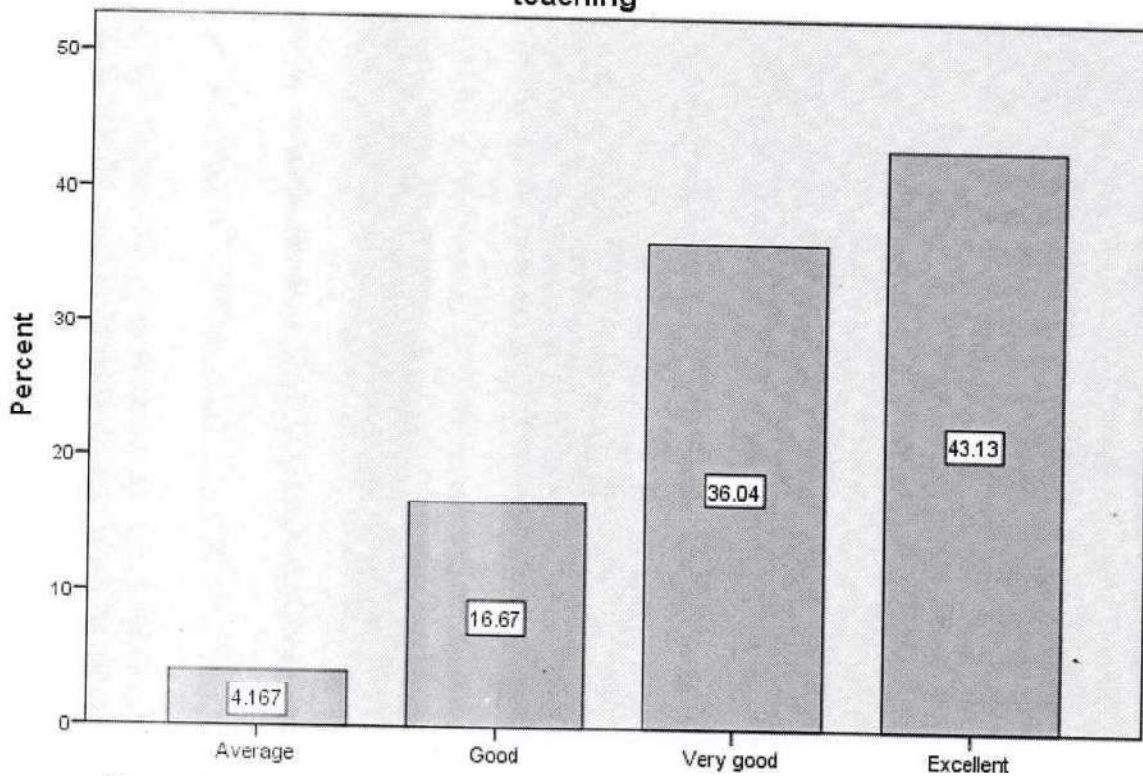


Percentage usage of teaching aids and ICT in the class by faculty to facilitate teaching

	Frequency	Percent
Average	20	4.2
Good	80	16.7
Very good	173	36.0
Excellent	207	43.1
Total	480	100.0

Overall, the table indicates that faculty used teaching aids and ICT in a majority of the classes. The most frequent usage category was "Excellent" (43.1%), followed by "Very Good" (36%). This suggests that faculty tend to use teaching aids and ICT to a great extent in their classes.

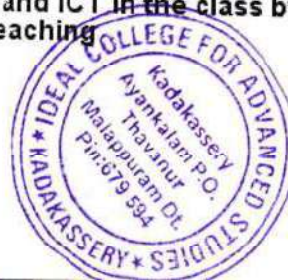
Percentage usage of teaching aids and ICT in the class by faculty to facilitate teaching



Percentage usage of teaching aids and ICT in the class by faculty to facilitate teaching

[Handwritten signature]

Prof. KOYAKUTTY T.
PRINCIPAL
IDEAL COLLEGE FOR ADVANCED STUDIES
KADAKASSERY, AYANKALAM, P.O. THAVANUR
MALAPPURAM DT., KERALA, PIN: 679 531

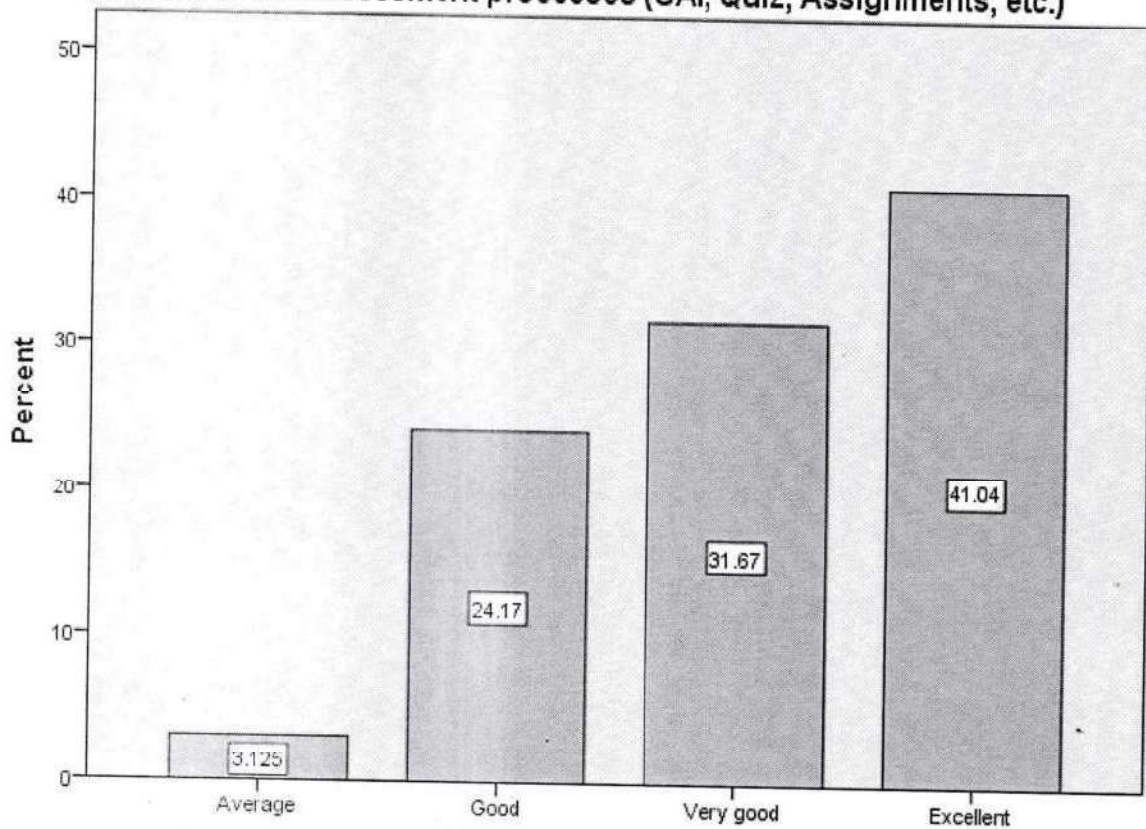


Fairness in the assessment processes (CAI, Quiz, Assignments, etc.)

	Frequency	Percent
Average	15	3.1
Good	116	24.2
Very good	152	31.7
Excellent	197	41.0
Total	480	100.0

The table shows the distribution of assessments by fairness in the assessment process. The categories are Average, Good, Very Good, and Excellent. Overall, the table indicates that the majority of students (72.7%) were assessed in a way that is considered to be very good or excellent in terms of fairness in the assessment process.

Fairness in the assessment processes (CAI, Quiz, Assignments, etc.)



Fairness in the assessment processes (CAI, Quiz, Assignments, etc.)

[Handwritten Signature]

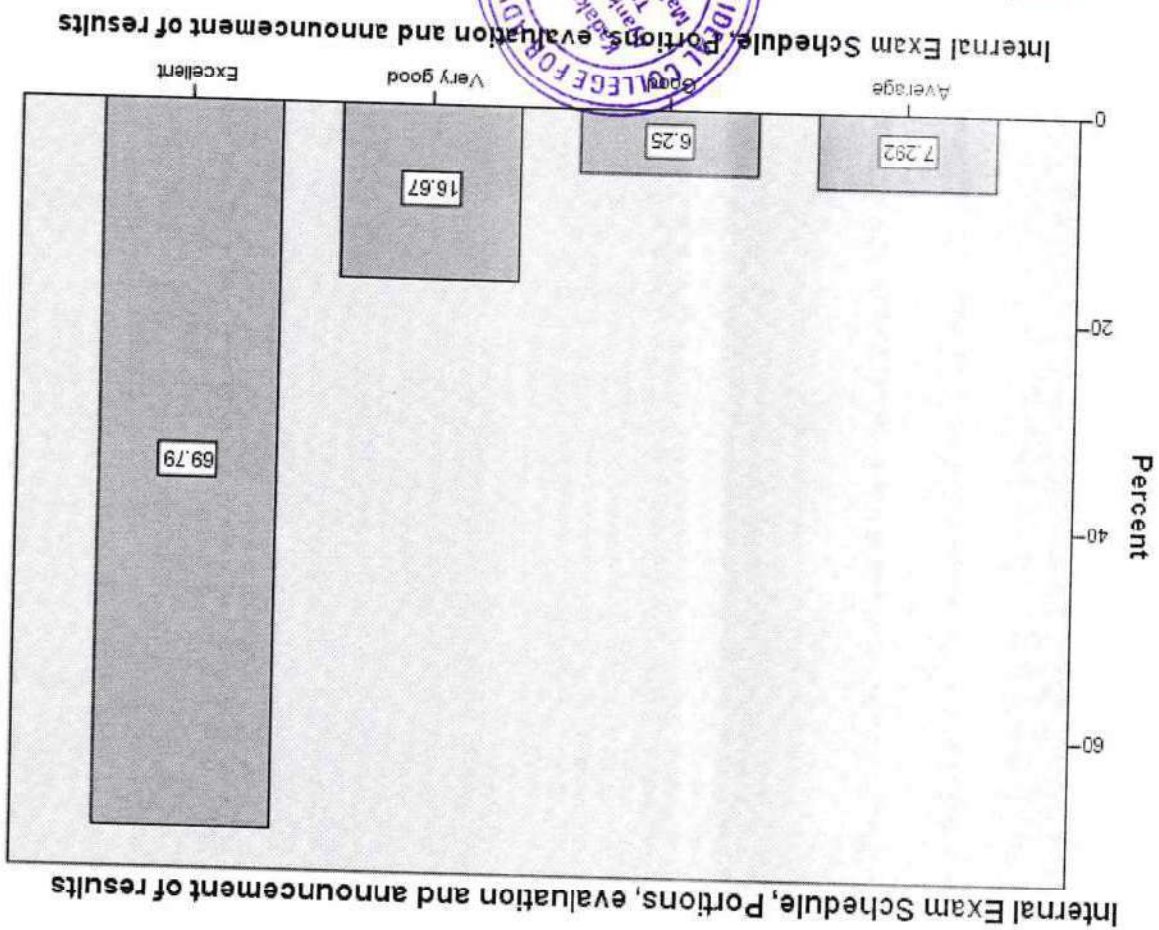
Prof. KOYAKUTTY
PRINCIPAL

IDEAL COLLEGE FOR ADVANCED STUDIES
KADAKASSERY, AYANKALAM, P.O. THAVANUR
MALAPPURAM DIST., KERALA, PIN: 679 202



Internal Exam Schedule, Portions, evaluation and announcement of results	Frequency	Percent
Average	35	7.3
Good	30	6.3
Very good	80	16.7
Excellent	335	69.8
Total	480	100.0

The table shows the efficiency of conducting internal exam, portion completion, evaluation and announcement of result. The categories are Average, Good, Very Good, and Excellent. Overall, the table indicates that of efficiency of conducting internal exam, portion completion, evaluation and announcement of result considered to be excellent in nearly 70%.



Internal Exam Schedule, Portions, evaluation and announcement of results



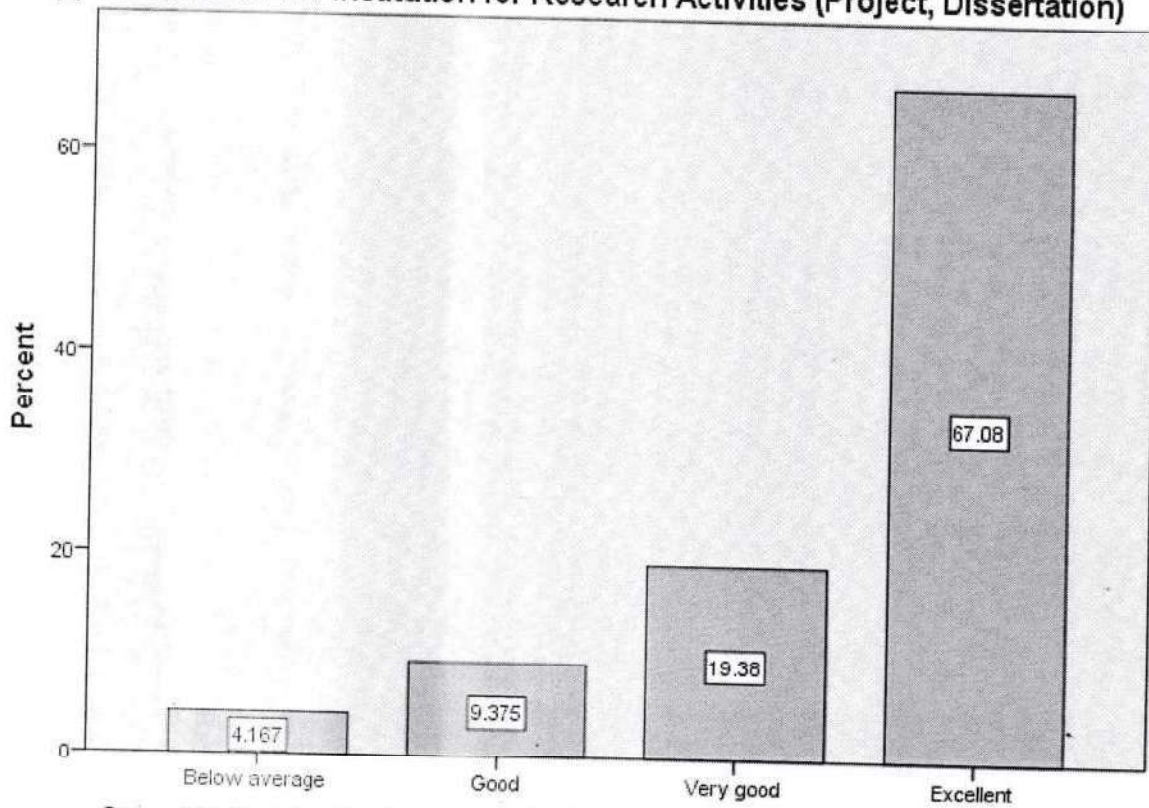
PROF. KOYAKKAL
 IDEAL COLLEGE FOR ADVANCED STUDIES
 KADAKASSERY, AVANKALAM, OTHAWAN
 MALAPPURAM DT., KERALA, PIN: 679 596

Opportunities in the institution for Research Activities (Project, Dissertation)

	Frequency	Percent
Below average	20	4.2
Good	45	9.4
Very good	93	19.4
Excellent	322	67.1
Total	480	100.0

The table shows the number of opportunities in the institution for research activities, categorized by the rating of the activity (dissertation or project). Overall, the table indicates that the majority of research opportunities (86.5%) were rated as Very Good or Excellent. This suggests that the institution offers a high number of high-quality research opportunities.

Opportunities in the institution for Research Activities (Project, Dissertation)



Opportunities in the institution for Research Activities (Project, Dissertation)

[Handwritten signature]

Prof. KOYAKU
 PRINCIPAL
 IDEAL COLLEGE FOR ADVANCED STUDIES
 KADAKASSERY, KADAKALAM, P.O. THAVANUR
 MALAPPURAM DISTRICT

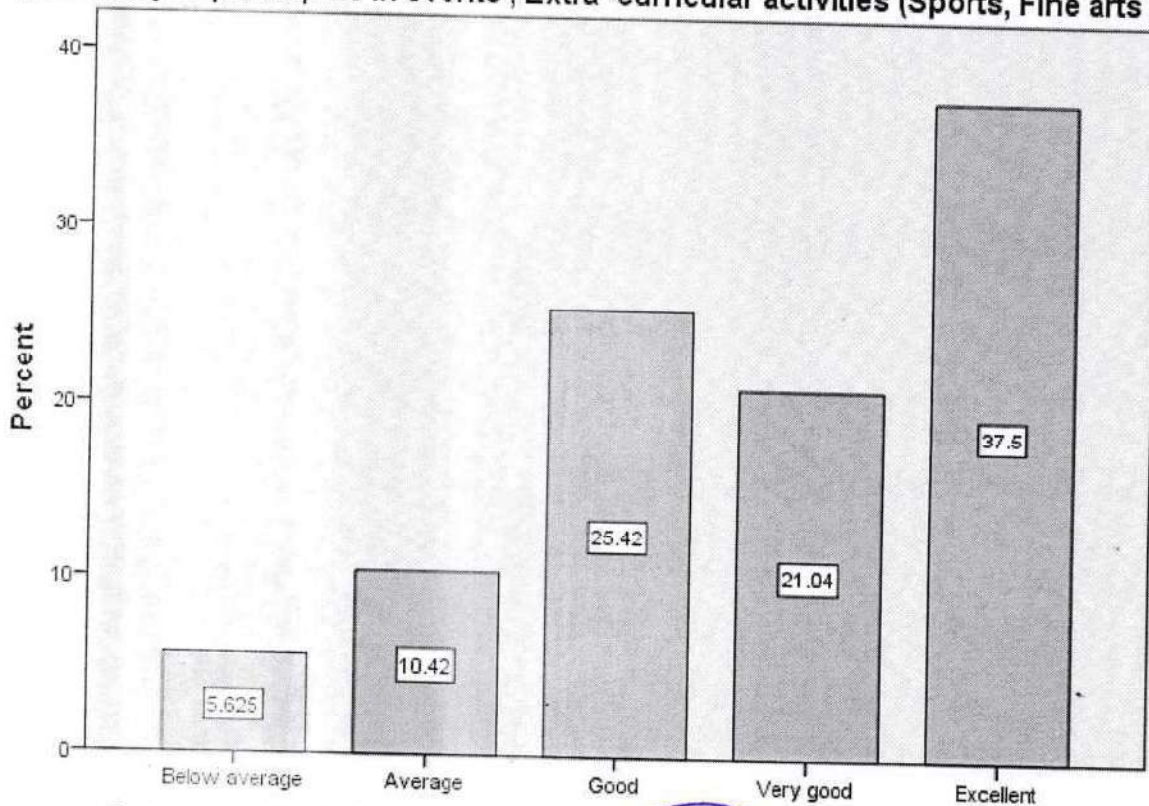


Opportunity to participate in events , Extra -curricular activities (Sports, Fine arts)

	Frequency	Percent
Below average	27	5.6
Average	50	10.4
Good	122	25.4
Very good	101	21.0
Excellent	180	37.5
Total	480	100.0

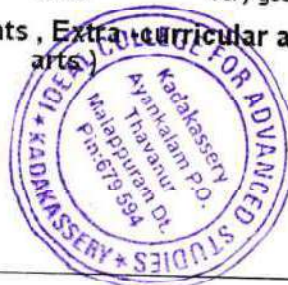
The table shows the frequency of students participating in extracurricular activities. The categories are Below Average, Average, Good, Very Good, and Excellent. Overall, the table indicates that a majority of students (83.9%) participated in extracurricular activities at a level that is considered to be good , very good and excellent . However, a significant number of students (16%) participated at a level that is considered below average or average.

Opportunity to participate in events , Extra -curricular activities (Sports, Fine arts)



Opportunity to participate in events , Extra -curricular activities (Sports, Fine arts)

Prof. KOYIL
 PRINCIPAL
 IDEAL COLLEGE FOR ADVANCED STUDIES
 KADAKASSERY, AYANKALAM, KOLLAM DISTRICT
 MALAPPUZHAM DT., KERALA. PIN: 686 022

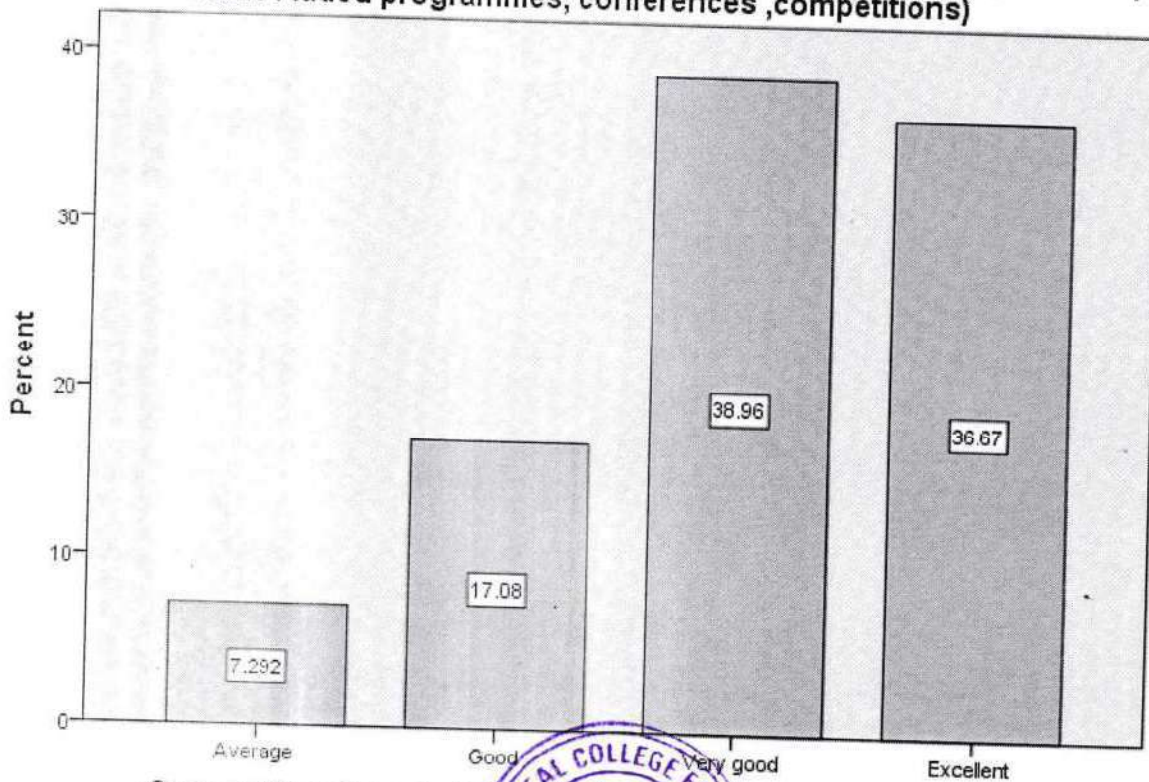


Opportunities for out of classroom learning (guest lectures, seminars, workshop, value Added programmes, conferences ,competitions)

	Frequency	Percent
Average	35	7.3
Good	82	17.1
Very good	187	39.0
Excellent	176	36.7
Total	480	100.0

The table shows the frequency of out-of-classroom learning opportunities offered. The categories are Guest Lectures, Seminars, Workshops, Value Added Programs, Conferences, and Competitions. Overall, the table indicates that out-of-classroom learning opportunities were offered at a frequency that is considered very good or excellent in over 75.7% . This suggests that the institution offers a high number of out-of-classroom learning opportunities for students.

Opportunities for out of classroom learning (guest lectures, seminars, workshop, value Added programmes, conferences ,competitions)



Opportunities for out of classroom learning (guest lectures, seminars, workshop, value Added programmes, conferences ,competitions)

[Signature]
PRIN. KOYAKUTTY T. K.
 PRINCIPAL
 IDEAL COLLEGE FOR ADVANCED STUDIES
 KADAKASSERY, AVANKALAM P.O. TRAVAN K
 MATHEPURAM Dt. KERALA, PIN: 679 594

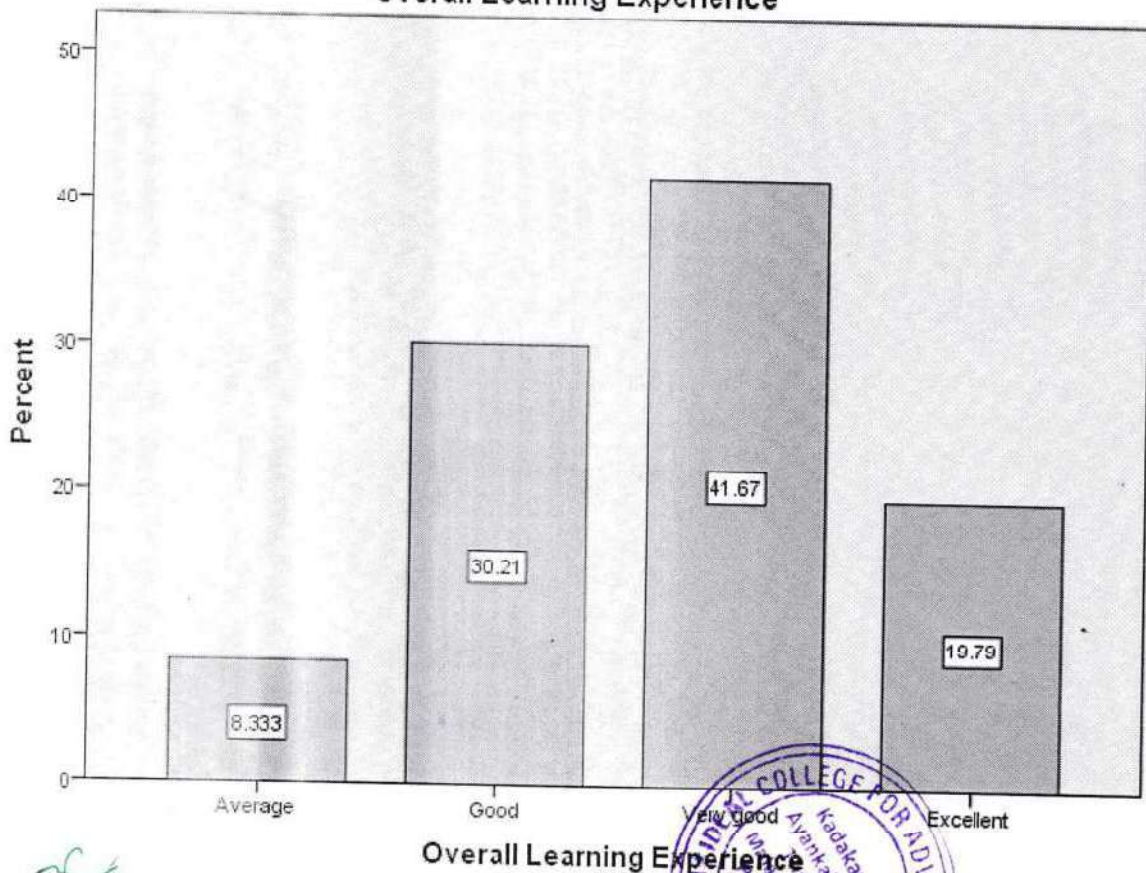


Overall Learning Experience

	Frequency	Percent
Average	40	8.3
Good	145	30.2
Very good	200	41.7
Excellent	95	19.8
Total	480	100.0

The table shows the average frequency of overall learning experiences for a group of students. Overall, the table indicates that the majority of students (61.5%) had overall learning experiences that were considered to be very good or excellent. This suggests that the learning environment is effective for a large portion of the students.

Overall Learning Experience



M 3

Prof. KOYAKUTTY T. K.
PRINCIPAL

IDEAL COLLEGE FOR ADVANCED STUDIES
KADAKASSERY, AYANKALAM, P.O. THAVAN
MALAPPURAM DIST., KERALA, PIN: 679

