



# IDEAL COLLEGE FOR ADVANCED STUDIES

( Affiliated to University of Calicut )

KADAKASSERY, THAVANUR PO, MALAPPURAM DT, KERALA 679573

0494 2 686 675 | 2 687 475 | 2 688 455 | 2 688 575

[www.idealcollegekadakassery.ac.in](http://www.idealcollegekadakassery.ac.in)

[icas@idealeducation.org](mailto:icas@idealeducation.org)

## INTERNAL QUALITY ASSURANCE CELL (IQAC)

### STUDENTS FEEDBACK

(2018-2019)

**NUMBER OF RESPONDENTS: 432**

**Prof. KOYAKUTTY T. K.**  
PRINCIPAL

IDEAL COLLEGE FOR ADVANCED STUDIES  
KADAKASSERY, THAVANUR P.O.,  
MALAPPURAM DT., KERALA, PIN-679 573

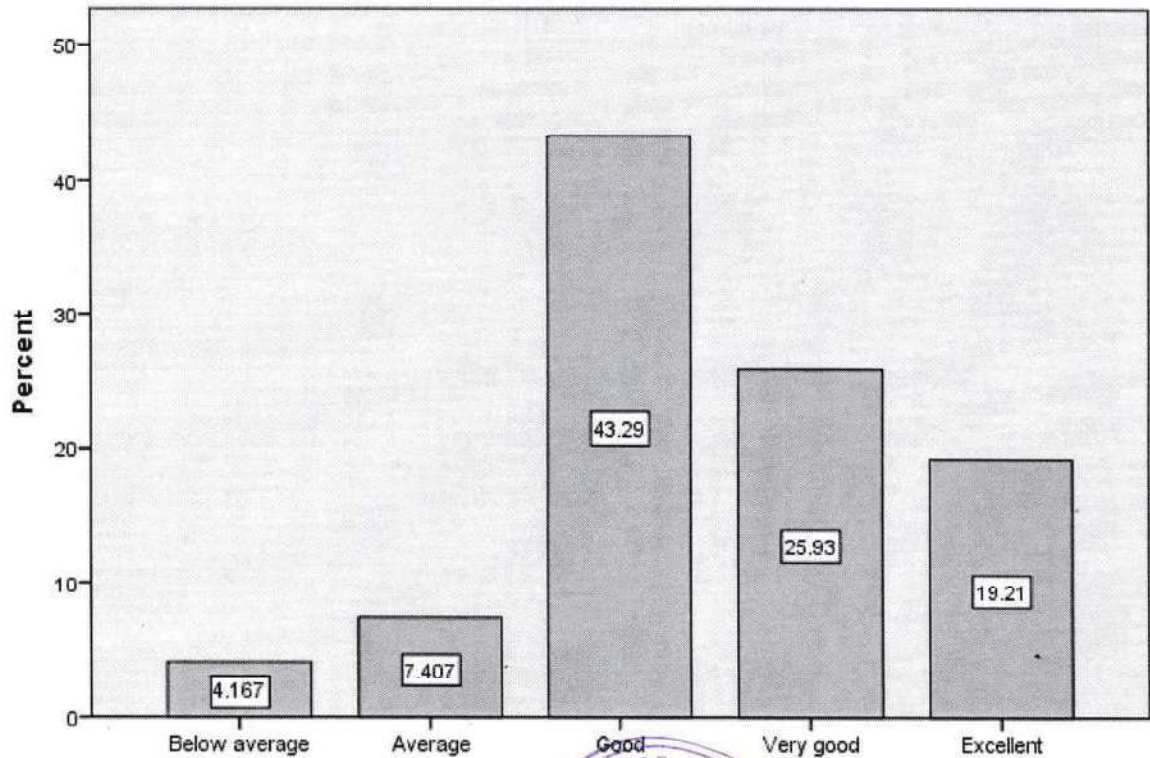


**Topics covered in Curriculum and Syllabi of this Course are relevant for life and are sufficient**

	Frequency	Percent
Below average	18	4.2
Average	32	7.4
Good	187	43.3
Very good	112	25.9
Excellent	83	19.2
Total	432	100.0

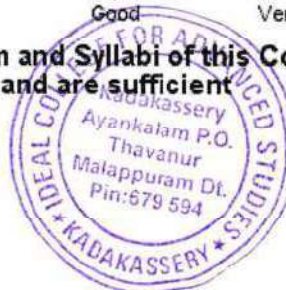
The table shows 88.4 % of students opinioned that the college is good very good and excellent in covering topics in curriculum and syllabi and also it is sufficient and relevant for their life

**Topics covered in Curriculum and Syllabi of this Course are relevant for life and are sufficient**



**Topics covered in Curriculum and Syllabi of this Course are relevant for life and are sufficient**

*[Signature]*  
**Prof. KOYAKUTTY T. K.**  
 PRINCIPAL  
 IDEAL COLLEGE FOR ADVANCED STUDIES  
 KADAKASSERY, AYANKALAM, P.O. THAVANUR  
 MALAPPURAM DT., KERALA, PIN: 679 594

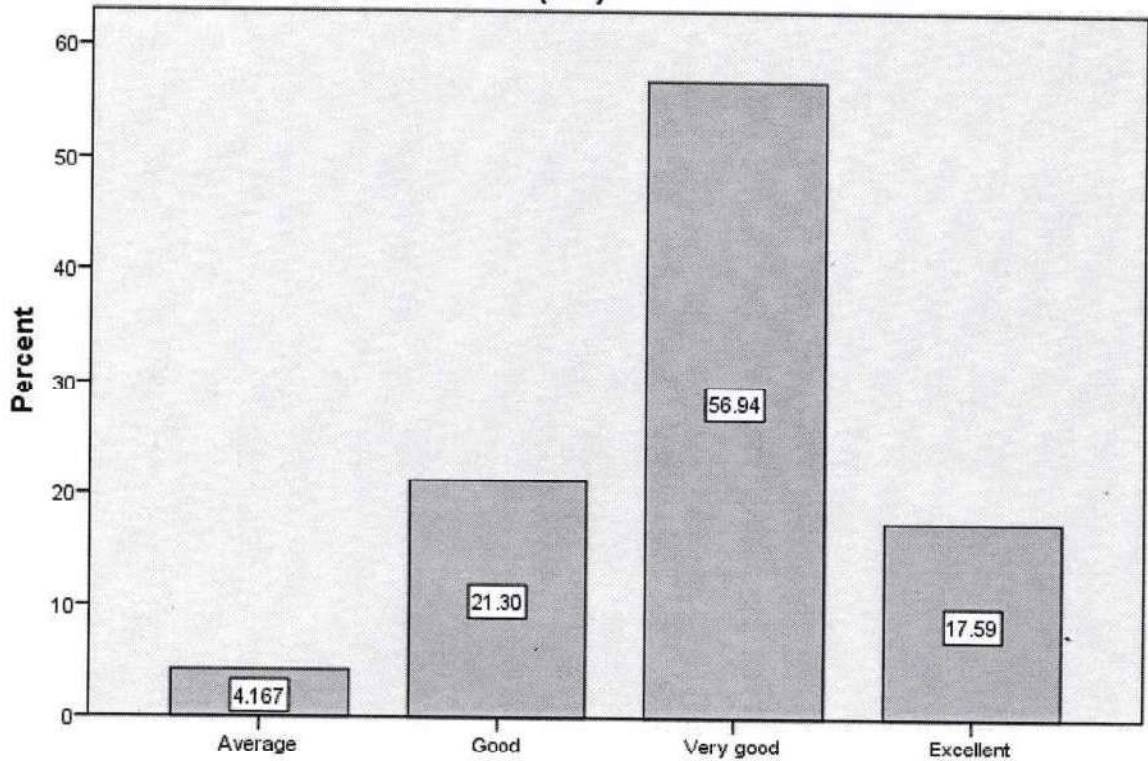


**Extent of syllabi covered in the Class are sufficient to attend the internal exams (CIA)**

	Frequency	Percent
Average	18	4.2
Good	92	21.3
Very good	246	56.9
Excellent	76	17.6
Total	432	100.0

The table shows the distribution of extent of syllabi covered for internal exams. Overall, the table indicates that the majority of students states that (95.8 %) institution considered to be good , very good and excellent preparation for the internal exam.

**Extent of syllabi covered in the Class are sufficient to attend the internal exams (CIA)**



**Extent of syllabi covered in the Class are sufficient to attend the internal exams (CIA)**

*Handwritten signature*

**Prof. KOYAKUTTY T. K.**  
PRINCIPAL

IDEAL COLLEGE FOR ADVANCED STUDIES  
KADAKASSERY, AYANKALAM P.O. THAVANUR  
MALAPPURAM DL. PIN: 679 594



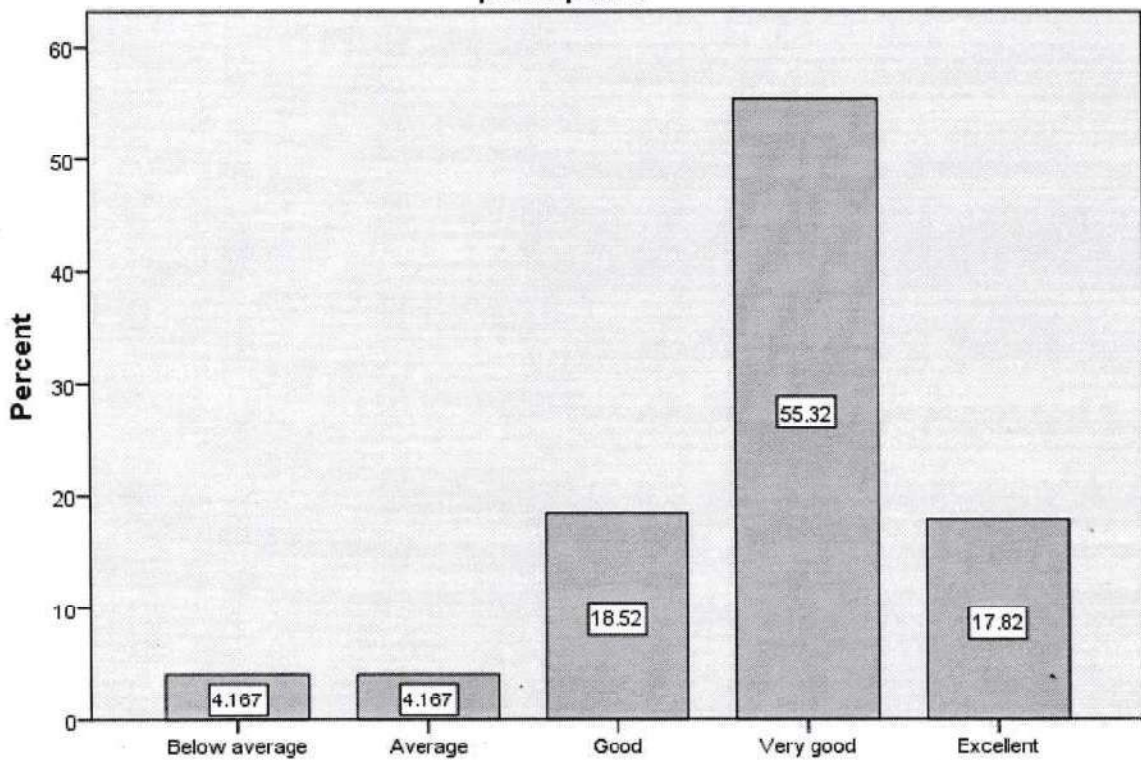


**Course delivery by the faculty member in the class are interesting, interactive and participative**

	Frequency	Percent
Below average	18	4.2
Average	18	4.2
Good	80	18.5
Very good	239	55.3
Excellent	77	17.8
Total	432	100.0

The table shows the status of course delivery of faculty members in the classes. Most of the students argue that faculties are very good (55.3%) and good (18.5) in delivering classes though participative and interesting mode.

**Course delivery by the faculty member in the class are interesting, interactive and participative**



**Course delivery by the faculty member in the class are interesting, interactive and participative**

*[Handwritten signature]*  
 IDEAL COLLEGE FOR ADVANCED STUDIES  
 KADAKASSERY, AYANKALAM, THAVANUR  
 MALAPPURAM DISTRICT, KERALA, INDIA

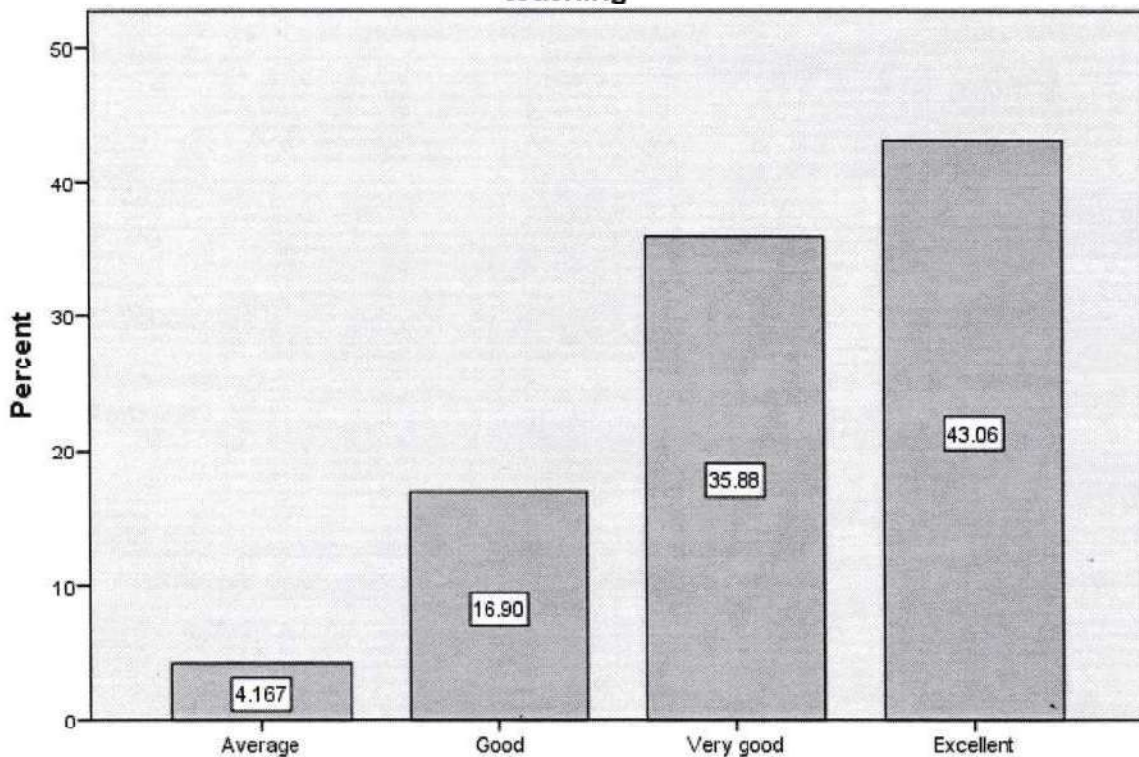


Percentage usage of teaching aids and ICT in the class by faculty to facilitate teaching

	Frequency	Percent
Average	18	4.2
Good	73	16.9
Very good	155	35.9
Excellent	186	43.1
Total	432	100.0

Overall, the table indicates that faculty used teaching aids and ICT in a majority of the classes (95.9%). The most frequent usage category was "Excellent" (43.1%), followed by "Very Good" (35.9%). This suggests that faculty tend to use teaching aids and ICT to a great extent in their classes.

Percentage usage of teaching aids and ICT in the class by faculty to facilitate teaching



Percentage usage of teaching aids and ICT in the class by faculty to facilitate teaching

  
 Prof. KOYA  
 PRI  
 IDEAL COLLEGE F.  
 KADAKASSERY, DIST.  
 MALAPPURAM DT.



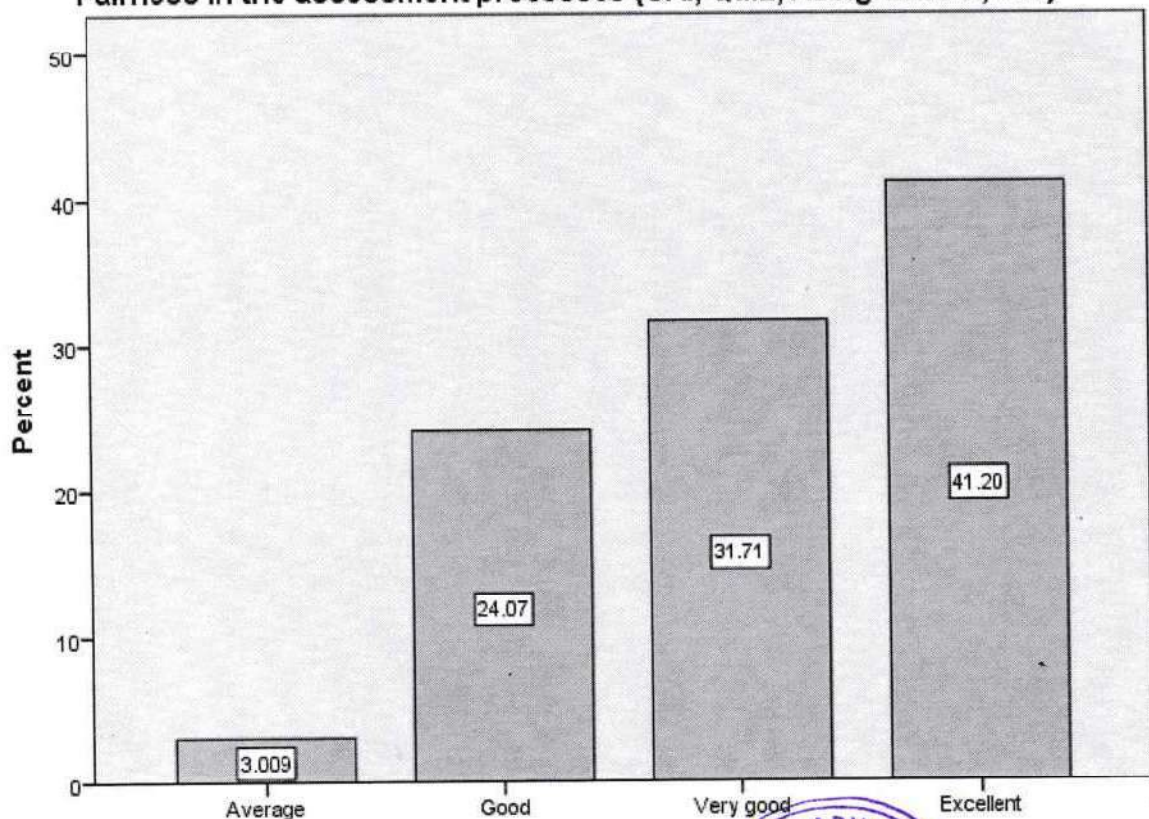


Fairness in the assessment processes (CAI, Quiz, Assignments, etc.)

	Frequency	Percent
Average	13	3.0
Good	104	24.1
Very good	137	31.7
Excellent	178	41.2
Total	432	100.0

The table shows the distribution of assessments by fairness in the assessment process. The categories are Average, Good, Very Good, and Excellent. Overall, the table indicates that the majority of students (72.9%) were assessed in a way that is considered to be very good or excellent in terms of fairness in the assessment process.

Fairness in the assessment processes (CAI, Quiz, Assignments, etc.)



Fairness in the assessment processes (CAI, Quiz, Assignments, etc.)

*[Handwritten signature]*

**Prof. KOYAKUTTY T. K.**  
PRINCIPAL

IDEAL COLLEGE FOR ADVANCED STUDIES  
KADAKASSERY, AYANKALAM, P.O. THAVANUR

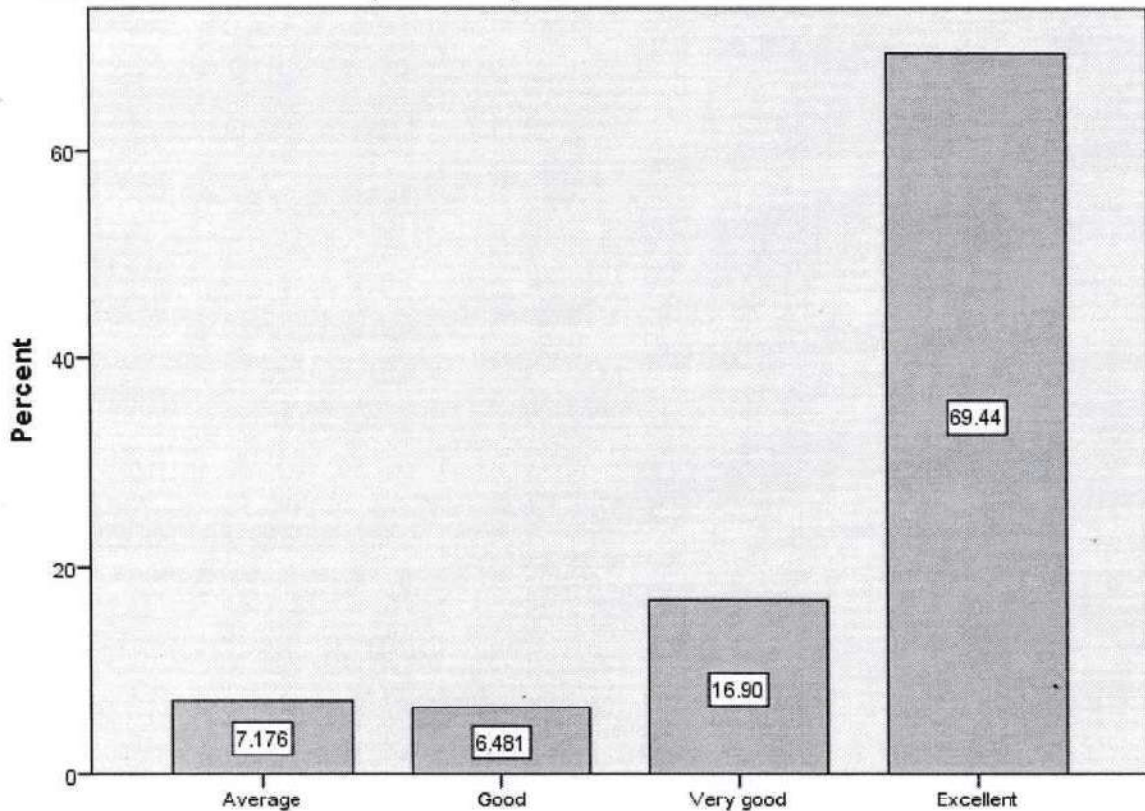


**Internal Exam Schedule, Portions, evaluation and announcement of results**

	Frequency	Percent
Average	31	7.2
Good	28	6.5
Very good	73	16.9
Excellent	300	69.4
Total	432	100.0

The table shows the efficiency of conducting internal exam, portion completion, evaluation and announcement of result. The categories are Average, Good, Very Good, and Excellent. Overall, the table indicates that of efficiency of conducting internal exam, portion completion, evaluation and announcement of result considered to be excellent in nearly 70% .

**Internal Exam Schedule, Portions, evaluation and announcement of results**



**Internal Exam Schedule, Portions, evaluation and announcement of results**

*Handwritten signature and date: DM 26*

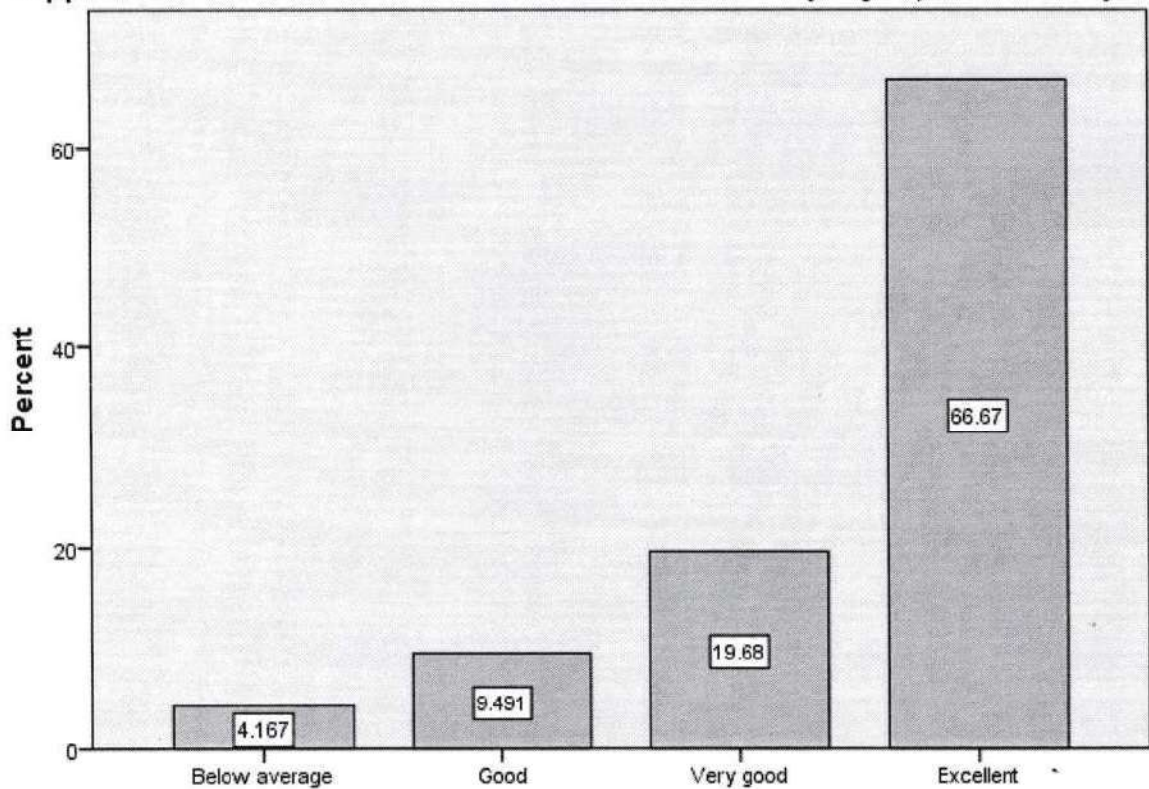


**Opportunities in the institution for Research Activities (Project, Dissertation)**

	Frequency	Percent
Below average	18	4.2
Good	41	9.5
Very good	85	19.7
Excellent	288	66.7
Total	432	100.0

The table shows the number of opportunities in the institution for research activities, categorized by the rating of the activity (dissertation or project). Overall, the table indicates that the majority of research opportunities (86.4%) were rated as Very Good or Excellent. This suggests that the institution offers a high number of high-quality research opportunities.

**Opportunities in the institution for Research Activities (Project, Dissertation)**



**Opportunities in the institution for Research Activities (Project, Dissertation)**

*DM 26*

**Prof. KOYAKUTTY T. K.**  
PRINCIPAL

IDEAL COLLEGE FOR ADVANCED STUDIES  
KADAKASSERY, AYANKALAM, P.O. THAVANUR  
MALAPPURAM DIST. KERALA, PIN: 679 594



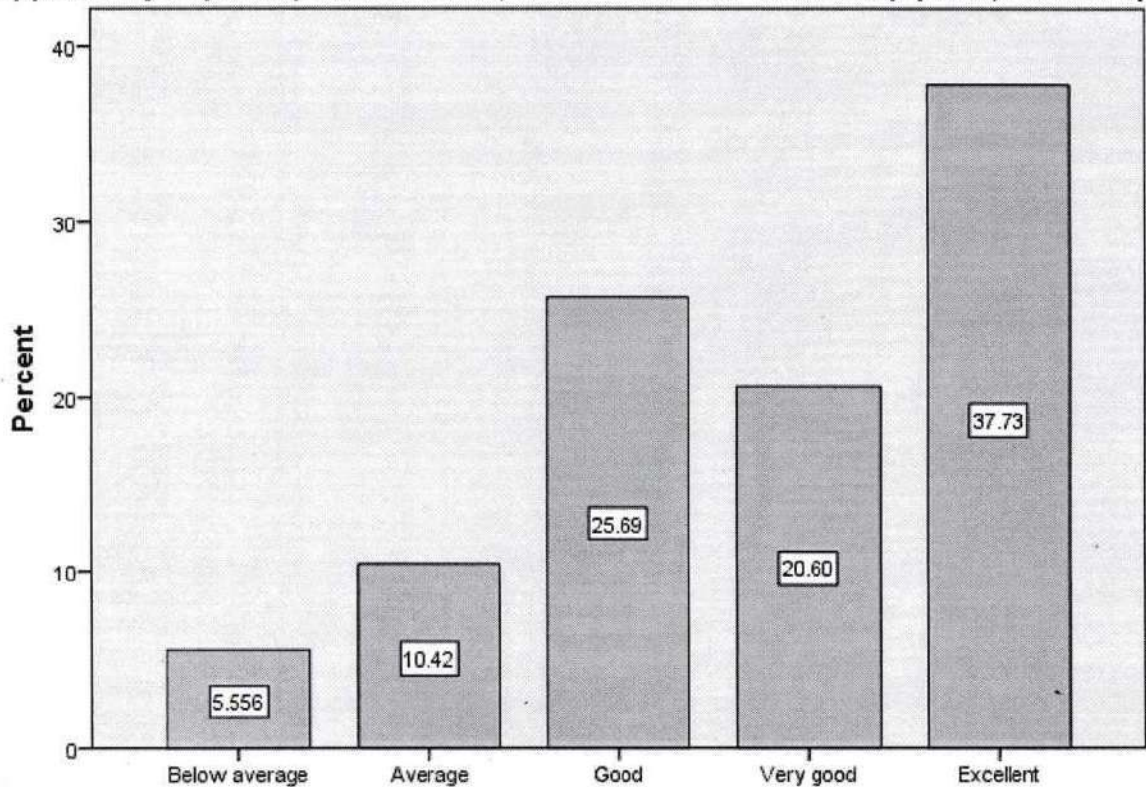


**Opportunity to participate in events , Extra -curricular activities (Sports, Fine arts )**

	Frequency	Percent
Below average	24	5.6
Average	45	10.4
Good	111	25.7
Very good	89	20.6
Excellent	163	37.7
Total	432	100.0

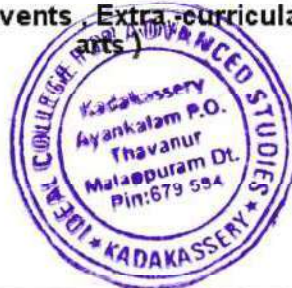
The table shows the frequency of students participating in extracurricular activities. The categories are Below Average, Average, Good, Very Good, and Excellent. Overall, the table indicates that a majority of students (84%) participated in extracurricular activities at a level that is considered to be good , very good and excellent . However, a significant number of students (16.%) participated at a level that is considered below average or average.

**Opportunity to participate in events , Extra -curricular activities (Sports, Fine arts )**



**Opportunity to participate in events , Extra -curricular activities (Sports, Fine arts )**

*Prof. KOYAKUTTY T. K.*  
 PRINCIPAL  
 IDEAL COLLEGE FOR ADVANCED STUDIES  
 KADAKASSERY, AYANKALAM, P.O. THAVANUR  
 MALAPPURAM DT., KERALA, PIN: 679 554

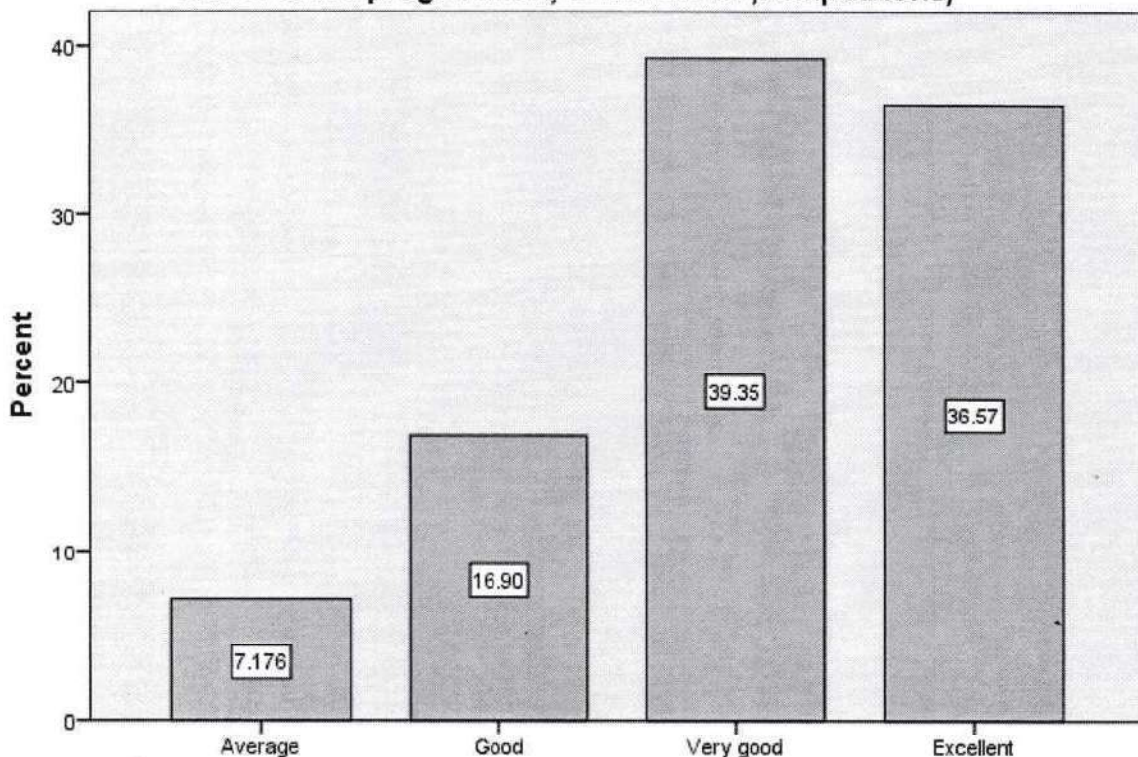


**Opportunities for out of classroom learning (guest lectures, seminars, workshop, value Added programmes, conferences, competitions)**

	Frequency	Percent
Average	31	7.2
Good	73	16.9
Very good	170	39.4
Excellent	158	36.6
Total	432	100.0

The table shows the frequency of out-of-classroom learning opportunities offered. The categories are Guest Lectures, Seminars, Workshops, Value Added Programs, Conferences, and Competitions. Overall, the table indicates that out-of-classroom learning opportunities were offered at a frequency that is considered very good or excellent in over 76%. This suggests that the institution offers a high number of out-of-classroom learning opportunities for students.

**Opportunities for out of classroom learning (guest lectures, seminars, workshop, value Added programmes, conferences ,competitions)**



**Opportunities for out of classroom learning (guest lectures, seminars, workshop, value Added programmes, conferences ,competitions)**

*Handwritten signature in green ink.*

**PROF. KOYAKUTTY T. K.**  
**PRINCIPAL**

**IDEAL COLLEGE FOR ADVANCED STUDIES**  
KADAKASSERY, AYANKALAM, P.O. THAVANUR  
MALAPPURAM DT., KERALA, PIN: 679 594



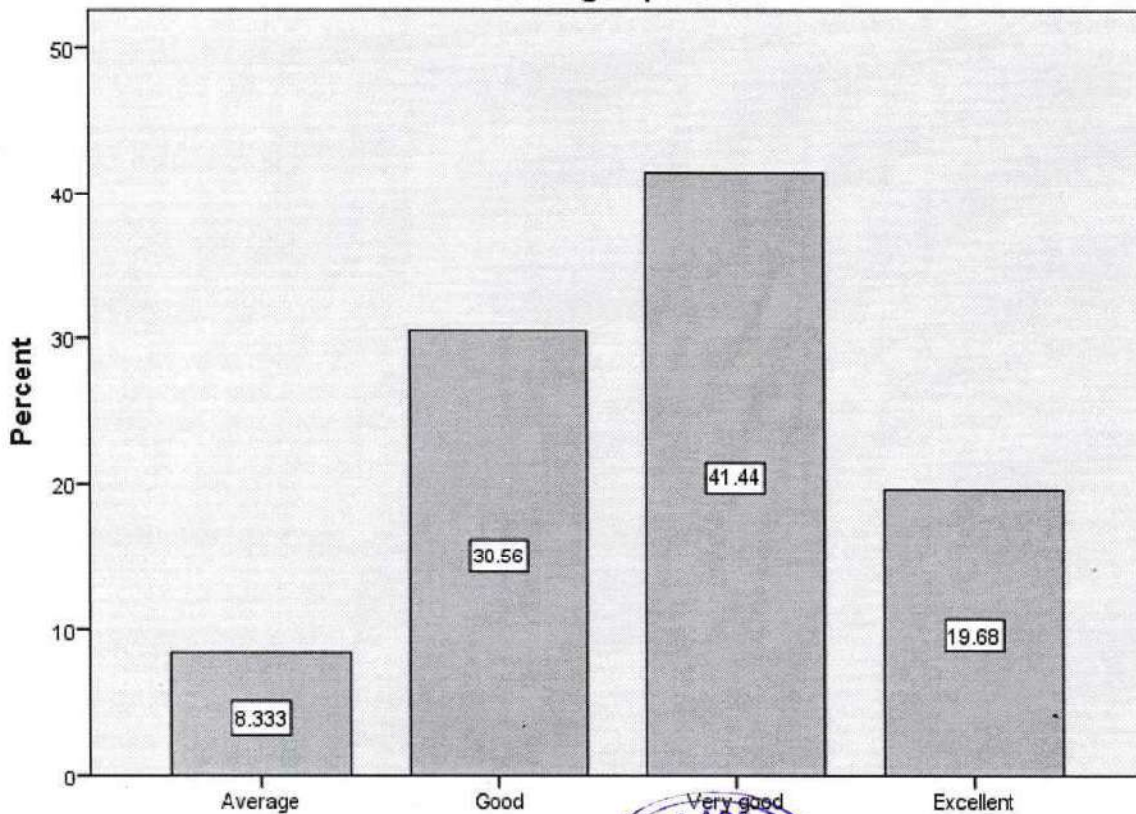


**Overall Learning Experience**

	Frequency	Percent
Average	36	8.3
Good	132	30.6
Very good	179	41.4
Excellent	85	19.7
Total	432	100.0

The table shows the average frequency of overall learning experiences for a group of students. Overall, the table indicates that the majority of students (61.1%) had overall learning experiences that were considered to be very good or excellent. This suggests that the learning environment is effective for a large portion of the students.

**Overall Learning Experience**



**Overall Learning Experience**

*[Handwritten Signature]*

**Prof. KOYAKUTTY T. K.**  
**PRINCIPAL**  
 IDEAL COLLEGE FOR ADVANCED STUDIES  
 KADAKASSERY, AYANKALAM P.O. THAVANUR  
 MALAPPURAM DT., KERALA, PIN: 679 594

